

The Psychosis High-Risk State

A Comprehensive State-of-the-Art Review

Paolo Fusar-Poli, MD, PhD; Stefan Borgwardt, MD, PhD; Andreas Bechdolf, MD; Jean Addington, PhD; Anita Riecher-Rössler, MD, PhD; Frauke Schultze-Lutter, PhD; Matcheri Keshavan, MD; Stephen Wood, MD, PhD; Stephan Ruhrmann, MD, PhD; Larry J. Seidman, MD, PhD; Lucia Valmaggia, MSc, PhD; Tyrone Cannon, PhD; Eva Velthorst, MSc, PhD; Lieuwe De Haan, MD, PhD; Barbara Cornblatt, MBA, PhD; Iliaria Bonoldi, MD; Max Birchwood, DSc; Thomas McGlashan, MD; William Carpenter, MD; Patrick McGorry, MD; Joachim Klosterkötter, MD, PhD; Philip McGuire, MD, PhD; Alison Yung, MD

Context: During the past 2 decades, a major transition in the clinical characterization of psychotic disorders has occurred. The construct of a clinical high-risk (HR) state for psychosis has evolved to capture the prepsychotic phase, describing people presenting with potentially prodromal symptoms. The importance of this HR state has been increasingly recognized to such an extent that a new syndrome is being considered as a diagnostic category in the DSM-5.

Objective: To reframe the HR state in a comprehensive state-of-the-art review on the progress that has been made while also recognizing the challenges that remain.

Data Sources: Available HR research of the past 20 years from PubMed, books, meetings, abstracts, and international conferences.

Study Selection and Data Extraction: Critical review of HR studies addressing historical development, inclusion criteria, epidemiologic research, transition criteria, outcomes, clinical and functional characteristics,

neurocognition, neuroimaging, predictors of psychosis development, treatment trials, socioeconomic aspects, nosography, and future challenges in the field.

Data Synthesis: Relevant articles retrieved in the literature search were discussed by a large group of leading worldwide experts in the field. The core results are presented after consensus and are summarized in illustrative tables and figures.

Conclusions: The relatively new field of HR research in psychosis is exciting. It has the potential to shed light on the development of major psychotic disorders and to alter their course. It also provides a rationale for service provision to those in need of help who could not previously access it and the possibility of changing trajectories for those with vulnerability to psychotic illnesses.

JAMA Psychiatry. 2013;70(1):107-120.

Published online November 19, 2012.

doi:10.1001/jamapsychiatry.2013.269

In our opinion, prevention of psychosis in the prepsychotic precursor stages is possible.

GERD HUBER, 1987¹

DURING THE PAST 2 DECADES, a transition in the clinical characterization of psychotic disorders has occurred. The construct of a clinical high-risk state for psychosis (hereinafter: HR) (also known as the “at-risk mental state” [ARMS],² “prodromal,” and “ultra-high-risk” [UHR] state) has evolved to capture the prepsychotic phase, describing people presenting with potentially prodromal symptoms.³ The importance of this HR stage of psychosis has been increasingly recognized to such an extent that an attenuated

psychosis syndrome is being considered as a new diagnostic category in the DSM-5.⁴ This category was introduced with the goal of developing treatments for prevention of psychotic disorders.⁵⁻⁹ However, its role as a diagnosis is being debated.¹⁰⁻¹⁵ This new conceptualization of the HR state would see indicated prevention¹⁶ of psychotic disorder as just one of many treatment outcomes. Prodromal symptoms and signs of psychosis are, thus, considered pleiotropic and are related to several potential outcomes, including the development of nonpsychotic disorders, rather than being unique to psychotic disorders. Thus, the proposed syndrome in the forthcoming DSM-5 can be considered analogous to chest pain (a condition requiring diagnosis and treatment and

Author Affiliations are listed at the end of this article.

possibly indicating myocardial infarction but also a sign of possible pulmonary embolism, pneumothorax, panic attack, or gastroesophageal reflux) rather than to hyperlipidemia (an asymptomatic risk factor for myocardial infarction).

Ideally, in early detection and intervention of psychosis, we would like to prevent or postpone the psychotic onset. If disease-modifying therapies or effective lifestyle preventive interventions were available, these could be started before any clinical signs appear. However, these treatments are not on the immediate horizon.¹⁷ Thus, the HR construct serves as a clinical stage in which further research is warranted. The objective of this article is to provide a comprehensive state-of-the-art review of the progress that has been made, while also recognizing the challenges that remain, based on the contributions of the leading experts in the field of prodromal psychosis.

METHODS

Relevant articles from the past 20 years retrieved in the literature search (PubMed, books, meetings, abstracts, and international conferences) were critically reviewed by worldwide experts in the field. Results are presented after consensus and are summarized in illustrative tables and figures.

RESULTS

HISTORY

Although early symptoms of psychosis have long been recognized,¹⁸ the term *prodromal* was first introduced by Mayer-Gross in 1932.¹⁹ It formally appeared in PubMed literature in 1989 in a pioneering work by Huber and Gross,²⁰ who, influenced by Mayer-Gross' observations, first described basic symptoms (BS) in the 1960s and initiated the first prospective early detection study in the 1980s. In 1989, Häfner et al,²¹ for the first time, examined the prodrome on a representative population of 232 first-admitted psychosis patients of a large catchment area in and around Mannheim, Germany, in the ABC (Age, Begin, and Course of Schizophrenia) study.²²⁻²⁵ It was shown that in 73% of all the patients, the disorder began with a prodromal phase, which lasted, on average, 5 years.^{23,24}

In 1991, Jackson and McGorry²⁶ started reliability studies to assess first-episode patients via a semistructured interview to determine the presence or absence of the prodromal symptoms. On the basis of this work, Yung et al²⁷ established the first clinical service for potentially prodromal individuals (1995) and began investigating the predictive validity of the prospectively defined ARMS criteria, developing the first UHR psychometric instrument. These and other investigations of early detection and intervention in the prodrome and first-episode psychosis were the subject of an early collection of articles on this topic.²⁷⁻³⁵

In the following years, in the United States, Miller and McGlashan³⁶ developed a similar psychometric instrument for quantitatively rating symptom severity for patients at UHR for psychosis.³⁷ In Europe, the further de-

velopment of the BS approach for identifying individuals at HR was grounded in the diagnostic validation of a scale for the assessment of BS (1996),³⁸ as implemented by the investigations of the group led by Klosterkötter et al.³⁹ All the previously mentioned preliminary investigations have put forth operationalized HR diagnostic criteria, as outlined in **Table 1** and described in the following subsection. These criteria have been the subject of a great deal of study and validation, as well as criticism. The explosion of interest in the literature has been remarkable, as characterized in **Figure 1**.

HR CRITERIA

The diagnostic flowchart of HR individuals is depicted in **Figure 2**. Two broad sets of criteria have been used to diagnose the HR state: UHR and BS criteria⁴¹ (Table 1). These criteria are used in help-seeking individuals aged 8 to 40 years.

The UHR criteria have been the most widely applied in the literature to date.^{6,42-48} Inclusion requires the presence of 1 or more of the following: attenuated psychotic symptoms (APS), brief limited intermittent psychotic episode (BLIP), and trait vulnerability plus a marked decline in psychosocial functioning (genetic risk and deterioration syndrome [GRD]) and unspecified prodromal symptoms (UPS). Different interview measures have been developed to assess UHR features and to determine whether individuals meet the previously mentioned criteria: the Comprehensive Assessment of At-Risk Mental State (CAARMS), the Structured Interview for Prodromal Symptoms (SIPS) (including the companion Scale of Prodromal Symptoms [SOPS]), the Early Recognition Inventory for the Retrospective Assessment of the Onset of Schizophrenia (ERiraos), and the Basel Screening Instrument for Psychosis (BSIP). The CAARMS was developed by Yung et al⁴⁹ at the Personal Assessment and Crisis Evaluation clinic in Melbourne and has been widely used in Australia, Asia, and Europe. The ERiraos was developed by Häfner et al²² to assess schizophrenia onset, and it is used in some German and Italian studies. The BSIP was developed in the Early Detection of Psychosis Clinic in Basel by Riecher-Rössler et al.⁵⁰ It differs slightly from the other 2 instruments by also including a fourth at-risk category of individuals with certain combinations of risk factors and UPS.⁵¹ Miller et al⁵² developed the SIPS/SOPS, which have become the instruments most used in North America and Europe. A self-rating prodromal screening questionnaire has also been developed and validated.⁵³

Basic symptoms (BS) are subjectively experienced disturbances of different domains, including perception, thought processing, language, and attention, that are distinct from classic psychotic symptoms in that they are independent of abnormal thought content and reality testing and insight into the symptoms' psychopathologic nature is intact.⁵⁴ Studied prospectively in several studies,^{45,55-58} BS were originally assessed using the Bonn Scale for the Assessment of Basic Symptoms (BSABS)^{58,59} and, more recently, the Schizophrenia Proneness Instrument, adult version (SPI-A)⁵⁹ and child and youth version (SPI-CY).⁶⁰ A special version for children and ado-

Table 1. Clinical High-Risk (HR) Criteria for Psychosis^a

Instrument	Basic Symptoms ^b	Genetic Risk and Deterioration Syndrome	Brief Limited Intermittent Psychotic Episode	Attenuated Psychotic Symptoms
CAARMS	NA	Family history of psychosis OR an individual with schizotypal personality disorder AND a decline in functioning OR sustained low functioning ^c	Transient psychotic symptoms: symptoms in the subscales of unusual thought content, nonbizarre ideas, perceptual abnormalities, disorganized speech; duration of the episode <1 wk; spontaneous remission; symptoms occurred within the past 12 mo; AND decline in functioning OR sustained low functioning ^{c,d}	Subthreshold attenuated positive symptoms: eg, ideas of reference, "magical" thinking, perceptual disturbance, paranoid ideation, odd thinking and speech; held with either subthreshold frequency or subthreshold intensity; present for >1 wk in the past 12 mo AND decline in functioning OR sustained low functioning ^c
SIPS/SOPS	NA	First-degree relative with a psychotic disorder OR an individual with schizotypal personality disorder AND a significant decrease in functioning in the past month compared with 1 year ago ^e	Transient psychotic symptoms in the realm of delusions, hallucinations, disorganization; intermittently for at least several minutes per day at least once per month, but <1 h/d, <4 d/wk over 1 mo. Onset in past 3 mo. Symptoms are not seriously disorganizing or dangerous ^f	Subthreshold attenuated positive symptoms: eg, unusual ideas, paranoia/suspiciousness, grandiosity, perceptual disturbance, conceptual disorganization; without psychotic-level conviction; onset or worsening in the past year; frequency: ≥1/wk in the past month
SPI-A / SPI-CY	Cognitive-perceptive basic symptoms (COPER): ≥1 of 10 basic symptoms with a score of ≥3 in the past 3 mo and first occurrence ≥1 y ago irrespective of earlier frequency or persistence AND/OR cognitive disturbances (COGDIS): ≥2 of 9 basic symptoms with a score of ≥3 in the past 3 mo	NA	NA	NA
BSIP	NA	Genetic risk AND further risk factors according to screening instrument (eg, social decline, unspecific prodromes) OR unspecified category: combination and minimal amount of certain unspecific risk factors/prodromes	Transient psychotic symptoms above transition cutoff each time <1 wk with spontaneous remission ^g	Subthresholded attenuated positive symptoms at least several times per week, in total persisting for >1 wk

Abbreviations: BS, basic symptom; BSIP, Basel Screening Instrument for Psychosis; CAARMS, Comprehensive Assessment of the At-Risk Mental State; NA, not assessed; SIPS, Structured Interview for Prodromal Syndromes; SOPS, Scale of Prodromal Symptoms; SPI-A, Schizophrenia Proneness Instrument, adult version; SPI-CY, Schizophrenia Proneness Instrument, child and youth version.

^a Adapted from Cannon et al.⁴⁰ Early Recognition Inventory for the Retrospective Assessment of the Onset of Schizophrenia inclusion criteria are not shown.

^b Basic symptoms include COPER (cognitive-perceptive symptoms) and COGDIS (cognitive disturbances).

^c A significant decline in functioning is defined as a Social and Occupational Functioning Assessment Scale (SOFAS) score at least 30% below the previous level of functioning, occurring within the last year and sustained for at least 1 month; a sustained low functioning is defined as a SOFAS score of 50 or less for the past 12 months or longer.

^d CAARMS: a first-episode psychosis is diagnosed when psychotic symptoms extend for more than 1 week.

^e A significant decrease is defined as a 30% decrease in Global Assessment of Functioning Scale score from pre-morbid baseline.

^f SIPS: a first-episode psychosis is diagnosed when psychotic symptoms extend more than 1 h/d for more than 4 d/wk during 1 month OR when they are seriously disorganizing and dangerous.

^g BSIP: a first-episode psychosis is diagnosed above the transition cutoff (Brief Psychiatric Rating Scales scores of hallucination ≥4, delusions ≥5, unusual thought content ≥5, and suspiciousness ≥5 and symptoms persist for >1 week).

lescents seemed necessary to allow for developmental issues and a distinct clustering of symptoms in this age group.³⁹ Besides a variety of subjective disturbances in affect, drive, stress tolerance, and body perception, these instruments focus on self-perceived cognitive and perceptual changes, ultimately clustered in 2 partially overlapping subsets relating to the COPER criteria (10 cognitive-perceptive BS) and the COGDIS criteria (the 9 cognitive BS that are the most predictive of later psychosis).⁵⁶ Because the UHR and BS criteria relate to complementary sets of clinical features, with the BS criteria perhaps identifying an earlier prodromal state and

the UHR criteria reflecting a somewhat later phase,^{61,62} there is an increasing tendency for centers to use both when assessing HR individuals.⁶³ Furthermore, the simultaneous presence of UHR and COGDIS seems to be associated with higher transition risks.⁴⁵ In the German Research Network on Schizophrenia,⁴⁷ which introduced the BS/UHR-based 2-stage model of early and late risk,⁶¹ the ERraos has been used to assess UHR and BS criteria.²⁵ The assumed natural history of the HR state and the model of psychosis onset developed according to the previously mentioned criteria are depicted in **Figure 3**.

EPIDEMIOLOGIC RESEARCH

As all HR criteria rely on help-seeking individuals, the prevalence of the HR state in the general population is unknown.⁶⁴ The available epidemiologic research, based on fully structured lay person interviews and questionnaires for the assessment of psychotic symptoms, which have been shown to generate results different from those of clinical interviews,^{65,66} estimates a prevalence of approximately 4% to 8% for psychotic symptoms or psychotic-like experiences: such symptoms may be associated with a degree of distress and help-seeking behavior but do not necessarily amount to clinical psychotic disorder.⁶⁷ However, studies in children have indicated that even frank psychotic symptoms occur in nearly every 10th

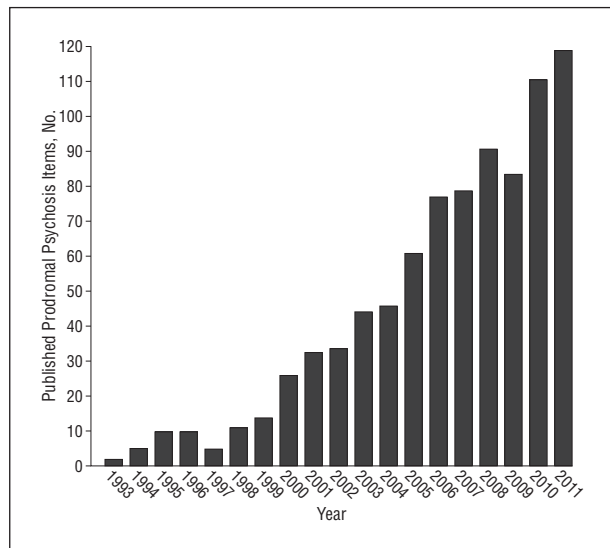


Figure 1. Prodromal psychosis items published in each year across the electronic databases. The literature search is updated to December 2011.

child but frequently possess little clinical relevance and remit without intervention. Research is needed to examine whether current at-risk criteria must be tailored to the special needs of children.⁶⁸ A pilot⁶⁹ to a currently conducted study assessing HR criteria according to the SIPS and BS criteria on the telephone by trained clinicians found much lower prevalence risks of 2% in 16- to 40-year-olds. Another recent study⁷⁰ in a general popu-

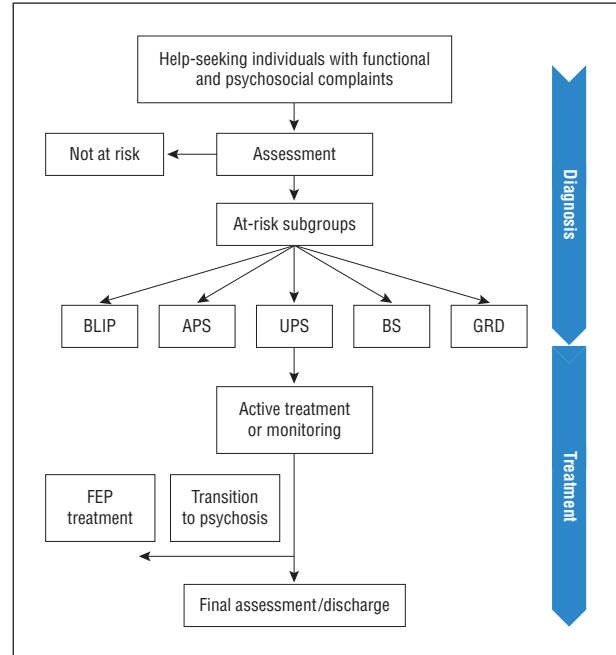


Figure 2. Clinical management (diagnosis and treatment) flowchart of the clinical high-risk state (HR) for psychosis. APS indicates attenuated psychotic symptoms subgroup; BLIP, brief limited intermittent psychotic episode subgroup; BS, basic symptoms subgroup; FEP, first-episode psychosis; GRD, genetic risk and deterioration syndrome subgroup; and UPS, unspecified prodromal symptoms subgroup.

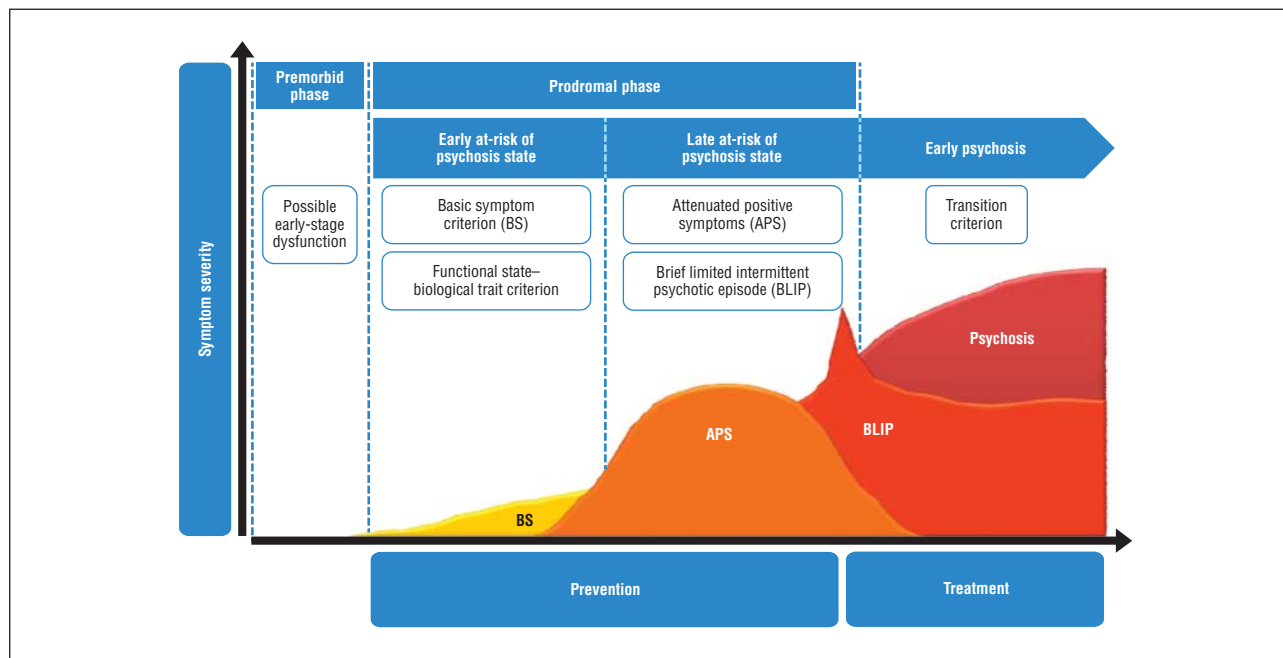


Figure 3. Model of psychosis onset from the clinical high-risk state. The higher the line on the y-axis, the higher the symptom severity.

lation sample of 212 adolescents who attend school (aged 11-13 years) estimated that up to 8% met the APS criteria for a risk syndrome according to the SIPS criteria, whereas only 1% did so when also considering the CAARMS disability criterion. Notably, 89% of adolescents with any APS reported distress caused by them. Thus, approximately 6.9% in this adolescent population fulfilled the APS and the distress criterion necessary to diagnose the proposed *DSM-5* syndrome (see later herein).

TRANSITION CRITERIA

In the HR literature, a variety of criteria have been used to define the transition to psychosis.⁷¹ Typically, these criteria are based on the definition given by Yung et al.⁷² They require the occurrence of at least 1 fully positive psychotic symptom several times a week for more than 1 week.⁵ Similarly, the SIPS criteria require the presence of at least 1 fully positive psychotic symptom several times per week for at least 1 month or at least 1 fully psychotic symptom for at least 1 day if this symptom is seriously disorganizing or dangerous⁵² (Table 1).

OUTCOMES

A key concept to emerge from work in this area is that although people with potentially prodromal features are at greatly increased risk for a psychotic disorder, mostly in a relatively short period,⁷³ less than 40% will actually develop one. The risk of transition to psychosis in samples of HR individuals has varied between studies, with declining risks in recent years.⁴² In a recent meta-analysis⁷⁴ of approximately 2500 HR individuals, it was shown that there was a mean (95% CI) transition risk, independent of the psychometric instruments used, of 18% (12%-25%) at 6 months of follow-up, 22% (17%-28%) at 1 year, 29% (23%-36%) at 2 years, 32% (24%-35%) at 3 years, and 36% (30%-43%) after 3 years⁷⁴ (**Figure 4**). In individuals who will later transition to psychosis, most will develop a DSM/ICD schizophrenia spectrum disorder.⁷⁵ Possible causes of the apparent decline in transition risks include (1) treatment of HR patients preventing or delaying psychosis onset; (2) a lead-time bias, that is, earlier detection resulting in transitions seemingly occurring later; and (3) a dilution effect, that is, more "false-positives" who are not really at risk being referred to HR services, possibly as a result of these services and their intake criteria becoming more well-known.⁴²

To date, transition estimates in the HR state have been made in samples of help-seeking individuals who were referred because they were distressed and impaired and, thus, have a higher risk of psychosis with the need for care than do those in the general population. The number of individuals in the community who meet HR criteria remains unknown (as noted previously herein),⁶⁹ and the available instruments are not indicated for screening in the general population.⁷⁶ In addition, little is known about the outcome in the group of HR individuals who do not convert to psychosis, as few studies provide the characteristics of these individuals.⁷⁷ In the largest study⁷⁸ published to date, to our knowledge, the nonconverting group demonstrated significant improvement in attenu-

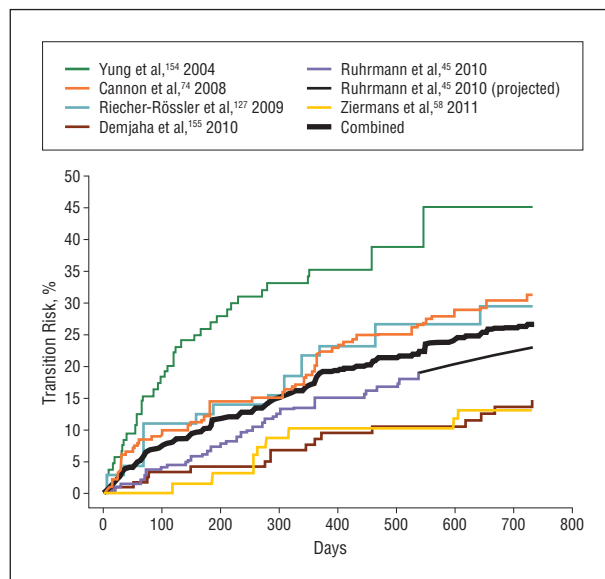


Figure 4. Meta-analysis of transition risks in studies reporting Kaplan-Meier estimates of psychosis transition over time in the high-risk state ($n = 984$ individuals) (for details of the study, see Fusar-Poli et al.⁷⁵). These risks are based on treated cohorts with no standardized treatment, so transition risk estimates are not for natural course or untreated cases.

ated positive symptoms, negative symptoms, and social and role functioning. However, this group remained, on average, at a lower level of functioning than did nonpsychiatric comparison subjects, suggesting that initial prodromal categorization is associated with persistent disability for a significant proportion.⁷⁸ Furthermore, retrospective studies^{23,79} of patients with schizophrenia have found that some individuals develop a prodrome-like syndrome that resolves (an "outpost" syndrome) only to develop full-blown schizophrenia some time later. In the absence of long-term follow-up data in the HR literature, it remains unclear in what proportion of these nonconverters the improvement will be permanent or only temporary.⁵⁴ A recently completed 15-year follow-up study⁸⁰ found that HR individuals continued to develop psychotic disorder up to 10 years after initial presentation, which suggests that outpost syndromes may be a possibility in a subset of individuals. This long-term perspective may, therefore, be in line with the 9.6-year 65% (COPER) to 79% (COGDIS) transition risk in BS studies.⁵⁵

CLINICAL AND FUNCTIONAL CHARACTERISTICS

In addition to HR symptoms, people who meet the criteria for HR in help-seeking populations usually present with other clinical concerns. Many have comorbid diagnoses, in particular anxiety, depression, and substance use disorders, that are clinically debilitating.^{81,82} High levels of negative symptoms, significant impairments in academic performance and occupational functioning, and difficulties with interpersonal relationships and substantially compromised subjective quality of life⁸³ are often observed.^{81,84-86} The experience of HR symptoms per se is also associated with a marked impairment in psychosocial functioning⁸⁶ which appears as a core feature of

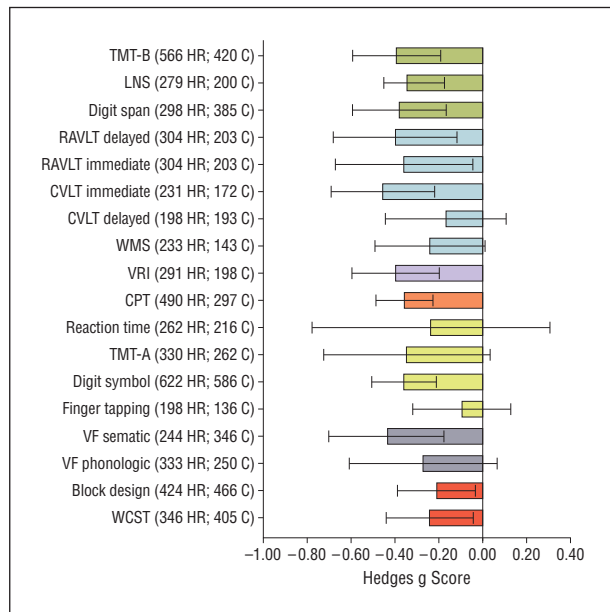


Figure 5. Neurocognitive profiles of individual tasks in high-risk individuals ($n = 1188$) compared with controls ($n = 1029$).⁹² Mean Hedges g scores are shown across cognitive tasks (negative values indicate worse performance in high-risk individuals compared with the control group). Error bars represent 95% CI. C indicates number of controls; CPT, Continuous Performance Test (d prime); CVLT, California Verbal Learning Test; HR, number of high-risk individuals; LNS, Letter Number Sequencing; RAVLT, Rey Auditory Verbal Learning Test; TMT-A, Trail Making Test Part A; TMT-B, Trail Making Test Part B; VF, Verbal Fluency; VRI, Visual Reproduction Index (WMS visual reproduction and Rey complex figures); WCST, Wisconsin Card Sorting Test (perseverative errors); and WMS, Wechsler Memory Scale (verbal recall). Working memory is shown in green, verbal memory in blue, visual memory in violet, attention in orange, processing speed in yellow, verbal fluency in gray, and executive functions in red.

the HR state.⁸⁷ Social impairment is a predictor of longitudinal outcome^{86,88} and tends to be resistant to treatment (pharmacological and psychosocial).⁸⁹ It is also reflected by a considerably decreased subjective quality of life.^{83,90}

The HR state might also be associated with increased suicidality. In a small pilot sample, 59% of HR patients who accepted treatment presented with at least mild suicidal ideation, and 47% reported at least 1 suicide attempt before being accepted in an early intervention service.⁹¹

NEUROCOGNITION

Neurocognitive studies in the HR population have attempted to establish whether the deficits observed during a first episode of psychosis were already evident during the prepsychotic phases. Two recent meta-analyses of more than 1000 HR individuals matched with control subjects yielded small-to-medium impairments across most neurocognitive domains (**Figure 5**).^{93,94} Widespread mild cognitive deficits are present in HR individuals, falling at a level that is intermediate between that of healthy individuals and those diagnosed as having schizophrenia⁸⁷ and comparable with those at familial (“genetic”) risk and with follow-back premorbid data.⁹² These deficits have been found to be predictive of functioning in the HR group.⁹⁵ Further deficits have been ob-

served in the social cognition domain,⁹⁴ which is considered a good predictor of functional and psychosocial outcomes.⁹⁶ Moreover, HR individuals who convert to psychosis show more severe neurocognitive deficits at baseline than do nonconverters in nearly all domains (eFigure; <http://www.jamapsych.com>),⁹³ in particular in the verbal fluency and memory domains.⁹⁴ However, there is considerable heterogeneity across studies, which underscores the variability in phenotypic expression or measurement sensitivity, and a critical need for future prospective longitudinal studies designed to assess the different trajectories of HR cognitive changes. The mild cognitive deficits of most HR individuals may account for the presenting symptoms and problems. These deficits are often more of a concern to the individual than is their long-term risk of transition,⁸⁸ and may predict poor psychosocial functioning.^{97,98}

STRUCTURAL, FUNCTIONAL, AND NEUROCHEMICAL IMAGING

A major goal of studies of people at HR for psychosis has been to find neuroimaging indicators of psychosis vulnerability.⁹⁹ Early studies focused on detecting specific volumetric reductions in regions known to be affected in schizophrenic psychoses, such as the hippocampus^{100,101} and the anterior cingulate cortex.¹⁰² Although significant differences have been seen compared with healthy samples, overall, these seem to be smaller than those evident in people with frank psychosis.¹⁰³ Although replication of significant findings is a problem for the field as a whole, volumetric reductions in the temporal,¹⁰⁴ cingulate,¹⁰⁴ insular,¹⁰⁵ prefrontal,¹⁰⁵ and parahippocampal¹⁰⁶ cortices have been associated with later development of psychosis. Furthermore, there is some evidence that structural brain imaging can be used to classify HR individuals in terms of their future clinical outcome.¹⁰⁷ However, there is enormous variability in findings, highlighting the heterogeneity of the population and the likely lack of sensitivity for volumetric measures alone.

More recent studies have used alternative imaging methods to examine the extent of baseline abnormalities in HR populations. Functional magnetic resonance imaging tasks have shown changes in activation in HR samples that are intermediate between those in first-episode patients and controls,^{108,109} although no replication studies have been published. Results of brain spectroscopy studies have suggested some differences in metabolite concentration, but samples are small and the regions studied are highly variable.¹¹⁰⁻¹¹² More promising are data from positron emission tomography studies, which indicate elevated striatal dopamine synthesis in HR individuals¹¹³ that is greater in those who later convert to psychosis¹¹⁴ and consistent with the finding of 14% elevation in established schizophrenia.¹¹⁵ Similarly, electrophysiologic abnormalities have been associated with the HR state.^{116,117} Several critical reviews and meta-analyses of structural,^{105,118,119} functional,¹²⁰ and neurochemical^{115,121-123} imaging findings in the HR state¹²⁴ are now available. The results of the largest multicenter structural neuroimaging study in HR individuals published to date¹⁰⁶ are depicted in **Figure 6**.

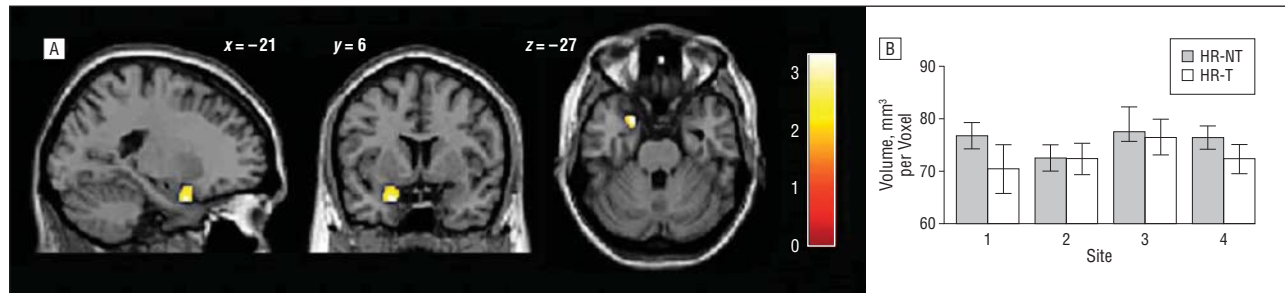


Figure 6. Structural brain alterations observed in the largest multisite neuroimaging studies of high-risk (HR) individuals ($n = 182$) and matched controls ($n = 167$).¹⁰⁶ Baseline differences are shown between HR individuals who did (HR-T, $n = 48$) and did not (HR-NT, $n = 134$) develop psychosis during the following 2 years. The HR-T individuals had less gray matter volume than did the HR-NT individuals in the left parahippocampal gyrus, bordering the uncus. The plot shows mean gray matter volumes for the 2 HR subgroups at each site (1 indicates London, United Kingdom; 2, Basel, Switzerland; 3, Munich, Germany; and 4, Melbourne, Australia). Error bars represent SD.

Advanced multimodal imaging techniques showed that dysfunction in dopamine and glutamate systems, both widely implicated in the pathogenesis of psychosis, directly correlated with altered cortical structure¹¹⁰ and functioning¹²⁵⁻¹²⁷ in HR individuals. Although further longitudinal neuroimaging studies are required to confirm the previously mentioned preliminary results, these recent findings suggest that advanced neuroimaging methods may have additional predictive value for detecting individuals at particularly high risk for psychosis.

PREDICTORS OF PSYCHOSIS

Can we predict who among HR individuals will progress to full-blown psychosis? A great deal of research on this issue has been generated in the last decade, and it has been shown that prediction of actual transition in those identified with HR criteria can be further improved by a stepwise multilevel assessment.¹²⁸ We focus herein on the clinical predictors of psychosis onset; available studies are summarized in **Table 2**.

An early study⁵⁵ showed that the absence of BS in HR individuals excluded a subsequent schizophrenia with a probability of 96%. More recently, the North American Prodrome Longitudinal Study⁸⁷ reported 5 clinical predictive variables in their sample of HR participants: genetic risk with functional decline, high unusual thought content scores, high suspicion/paranoia scores, low social functioning, and history of substance abuse. Three of the 5 variables were replicated to be associated with transition in an independent cohort from the Personal Assessment and Crisis Evaluation sample: high unusual thought content scores, low functioning, and genetic risk with functional decline.¹³¹ In the European Prediction of Psychosis Study,⁴⁵ a clinical prediction model including 6 variables produced favorable accuracy results. In this study, the regression equation was used to introduce a prognostic index that allows stratification of risk into 4 classes, thereby avoiding the considerable loss of sensitivity resulting from narrowing of criteria. A more individualized risk estimation or clinical staging of risk could significantly advance the development of risk-adapted inclusion criteria for randomized preventive trials.⁶² In the Basel Early Detection of Psychosis Clinic study, with follow-up of up to 7 years, HR individuals with high suspiciousness and high anhedonia/asociality scores had an especially high transition risk.¹²⁸

Prediction of psychosis could be further improved by combining the clinical markers with a family history of psychosis, neurocognitive^{128,133} or electrophysiological¹³⁴ measures, by investigating environmental factors,⁹⁸ by conducting multicenter studies,¹⁰⁶ by using advanced imaging voxel-based meta-analyses,^{106,119} or by adopting automated analysis methods.^{107,135} The latter point is addressed by recent studies using multivariate neurocognitive pattern classifications to facilitate the HR diagnosis and the individualized prediction of illness transition.¹³⁵ Classification accuracy was 91% for converters and 89% for nonconverters. Psychosis transition was mainly predicted by executive and verbal learning impairments.¹³⁵ Similarly, multivariate neuroanatomical gray matter pattern classification was 88% for individuals with later transition and 86% for those without.¹⁰⁷ However, a definitive conclusion concerning these predictions awaits replication in future studies.

TREATMENT TRIALS

Preventive interventions in psychosis are feasible and can be effective. Most trials indicate clinically meaningful advantages of focused treatment (psychological, psychopharmacologic, or neuroprotective interventions) compared with the respective contrast groups. A recent review¹³⁶ of treatment effectiveness in the HR state concluded that receiving focused treatment from specialized services was associated with lower risk of psychosis at 12 months and at 24 to 36 months. However, no reliable recommendations can be made regarding whether psychosocial interventions, such as cognitive behavior therapy; potentially neuroprotective agents, such as ω -3 fatty acids; or antipsychotic agents are more effective for the prevention of psychosis in HR. Consequently, the safest approach is recommended, that is, psychological interventions and fish oil intake rather than antipsychotic drug treatment. Several large-scale clinical trials are under way, which will substantially increase the evidence base for best clinical practice in HR.¹³⁷⁻¹³⁹ We present herein an updated meta-analysis of available randomized controlled treatment trials in the HR population, which includes transition data up to 1 year. We confirmed a significant effect of active treatments, with a risk ratio of 0.34 (from 23% to 7%, $P < .001$) and a number needed to treat of 6 in the focused treatments vs the con-

Table 2. Clinical Predictors of Transition to Psychosis From the HR State in Studies Enrolling at Least 60 Individuals and Reporting Regression Models of Significant Clinical Predictors^a

Source	HR Group	HR Sample, No.	PR, %	Follow-up, y	Predictors	%		
						PPV	SE	SP
Klosterkötter et al, ⁵⁵ 2001	BS	160	49	9.6	(1-4) Thought interference, pressure, preservation, blockages, (5) disturbance of receptive language, (6) unstable ideas of references, (7) derealization, (8-9) visual/acoustic perception disturbances, (10) inability to discriminate between ideas and perception, fantasy, and true memory ^b	65	87	54
Mason et al, ¹²⁹ 2004	UHR	74	50	2	(1) Odd beliefs/magical thinking, (2) marked impairment in role functioning, (3) blunted or inappropriate affect, (4) auditory hallucinations, (5) anhedonia/asociality ^c	86	84	86
Yung et al, ¹³⁰ 2004	UHR	104	39	2.3	(1) Attenuated psychosis symptoms + genetic risk, (2) long duration of prodromal symptoms, (3) poor social functioning, (4) poor attention ^d	81	60	93
Thompson et al, ¹³¹ 2011					(1) High unusual thought content scores; (2) low functioning; (3) having genetic risk with functional decline ^e	64	17	94
Cannon et al, ⁷³ 2008	UHR	291	35	2.5	(1) A genetic risk for schizophrenia with recent deterioration in functioning, (2) higher levels of unusual thought content, (3) higher levels of suspicion/paranoia, (4) greater social impairment, (5) and a history of substance abuse ^c	79	8	98
Riecher-Rössler et al, ¹²⁸ 2009	UHR	64	34	5.4	(1) Attenuated psychotic symptoms (suspiciousness), (2) negative symptoms (anhedonia/asociality), (3) cognitive deficits ^f	81	83	79
Ruhrmann et al, ⁴⁵ 2010	UHR + BS	245	19	1.5	(1) Positive symptoms, (2) bizarre thinking, (3) sleep disturbances, (4) schizotypal disorder, (5) level of functioning in the past year, (6) years of education ^g	83	42	98
Demjaha et al, ¹³² 2010	UHR	122	15	2	(1) Negative, (2) cognitive/disorganized CAARMS domains	NA	NA	NA

Abbreviations: BS, basic symptoms; CAARMS, Comprehensive Assessment of At-Risk Mental State; HR, clinical high risk for psychosis; NA, not available; PPV, positive predictive value; PR, psychosis risk; SE, sensitivity; SP, specificity; UHR, ultra high risk.

^aSchultze-Lutter et al¹⁵⁶ found no significant predictive power for Positive and Negative Syndrome Scale negative scores.

^bModel based on cognitive-perceptive symptoms.

^cFive-factor model.

^dModel requiring the presence of at least 1 of the 4 potential predictors.

^eThree-factor model.

^fCombined model.

^gSix-factor model (schizotypal disorder: symptom criteria >1 year); resulting in prognostic index with 4 risk classes (PR 3.5, 8.0, 18.4, 85.1).

trast group at 1 year. Details of the available trials are given in **Table 3**.

SOCIOECONOMIC CONSIDERATIONS

The preliminary cost-effectiveness literature indicated that the extra costs, compared with standard care, required in the first year of treatment are compensated for by subsequent savings associated with the prevention of transition to psychosis. These benefits are mainly related to a shortening of the duration of untreated psychosis in those who develop psychosis, resulting, for example, in less need for inpatient care and a reduction in treatment costs.^{145,146} Although early interventions might be associated with significant cost benefits even in the long term,¹⁴⁷ future research is required to fully address their cost-effectiveness.¹⁴⁸

ATTENUATED PSYCHOSIS SYNDROME

Many of the previously noted findings have informed the ongoing debate about the inclusion of an HR syndrome

in the next edition of the *DSM-5*.⁴ The current proposal is to include a category of “attenuated psychosis syndrome” in the *DSM-5* that is modeled on the UHR category of APS (<http://www.dsm5.org>). This new category was previously called the “psychosis risk syndrome.” However, the recent name change was an attempt to highlight current symptoms as the focus for treatment rather than the risk that the symptoms might pose for future psychotic disorder.¹¹ Furthermore, the category also requires the symptoms to be sufficiently distressing and disabling to the person or a parent or guardian to lead them to seek help (eAppendix).¹¹

At present, there is no diagnostic category in the *DSM* or the *ICD* for the HR state, although the schizotypal disorder included in the psychosis section in the *ICD-10* shares several similarities with the *DSM-5* proposal.¹⁰ In conventional clinical practice, HR individuals may not receive appropriate treatment despite the fact that this group experiences symptoms^{88,149} that are distressing enough for them to seek help and a considerably decreased quality of life.⁹⁰ Defining HR as a new diagnostic category may make clinicians more likely to identify

Table 3. Meta-analysis of Randomized Controlled Treatment Trials in HR Individuals Including Transition Data Up to 1 Year

Source	HR Inclusion Criteria	Focused Treatment	Contrast Group	DI, mo	NNT at 1 y, Mean (95% CI)	Transition at 1 y (Focused vs Contrast)	Meta-analysis	
							RR (95% CI)	P Value
McGorry et al, ⁷ 2002 ^a	CAARMS	Risperidone, 1-2 mg + CBT + NBI (n=31)	NBI (n=28)	6	4 (2.1-18.3)	19.3 vs 35.7, NS	0.541 (0.225-1.297)	.17
Morrison et al, ⁹ 2004 ^b	CAARMS based	CT (n=37)	Monitoring (n=23)	6	5 (2.3-63.8)	5.7 vs 21.7, NS	0.263 (0.057-1.205)	.09
McGlashan et al, ⁶ 2006	SIPS	Olanzapine, 5-15 mg (n=31)	Placebo (n=29)	12	5 (2.3-inf)	16.1 vs 37.9, NS	0.425 (0.168-1.075)	.07
Amminger et al, ⁸ 2010	CAARMS	ω-3 PUFA, 1.2 g (n=41)	Placebo (n=40)	3	5 (2.6-13.7)	4.8 vs 27.5, Sig	0.175 (0.041-0.746)	.02
Yung et al, ¹⁴⁰ 2011	CAARMS	Risperidone, 0.5-2 mg + CT (n=43)	CT + placebo (n=44) ST + placebo (n=28)	6	NA	4.7 vs 9.1 vs 7.1, NS ^c NS	0.516 (0.100-2.658)	.43
Addington et al, ¹⁴¹ 2011	SIPS	CBT (n=27)	ST (n=24)	6	8 (3.7-inf)	0 vs 12.5, NS	0.128 (0.007-2.350)	.17
Bechdolf et al, ⁵⁷ 2012	EIPS	IPI (n=63)	SC (n=65)	12	8 (4.2-27.3)	3 vs 16.9, Sig	0.178 (0.039-0.799)	.02
Overall ^d		273	281	7.3	5.8	7.6 vs 23	0.335 (0.219-0.575)	<.001

Abbreviations: CAARMS, Comprehensive Assessment of At-Risk Mental State; CBT, cognitive behavior therapy; CT, cognitive therapy; DI, duration of intervention; EIPS, early initial prodromal state (COPER or first-degree relatives with psychosis plus functional decline); HR, clinical high risk; inf, infinite; IPI, integrated psychological intervention (CT, social skills, psychoeducation for family, and cognitive remediation); NA, not assessed; NBI, needs-based intervention; NNT, number needed to treat; NS, nonsignificant differences between focused treatment and contrast group; PUFA, polyunsaturated fatty acid; RR, risk ratio; SC, supportive counseling; Sig, significant; SIPS, Structured Interview for Prodromal Symptoms; ST, supportive therapy.

^aSee also Phillips et al.¹⁴²

^bSee also Morrison et al.¹⁴³ Additional evidence suggests that preventing the start of cannabis use or stopping already started use may diminish the risk of a psychotic disorder.¹⁴⁴

^cSix-month results.

^dRandom effects models applied, $Q=3.590$, $P=.732$, $I^2=0$.

and treat these individuals. Although available evidence suggests that most HR individuals will not develop a psychotic disorder (at least within 3 years of presentation),⁷⁴ the purpose of clinical management at this stage is not solely to prevent the later onset of frank illness but also to ameliorate the presenting symptoms, problems, and functional deficits. These are often more of a concern to the individual than is their long-term risk of transition.⁴⁷ This finding is consistent with the newly proposed diagnostic label of attenuated psychosis syndrome rather than risk syndrome. Moreover, when HR individuals are engaged at this stage and then later develop psychosis, the delay before the latter is treated can be markedly reduced, and the first episode may be less traumatic. For clinical practice, a formal diagnosis will allow the development of treatment, not only prevention-related approved interventions; will grant access to the health care system; and will allow the establishment of rules to guide treatment, thus avoiding undertreatment and overtreatment.¹⁰

On the other hand, there are also counter-arguments against the inclusion of the HR state in the *DSM-5*. Regarding the implied risk of a full-blown disorder, concerns about the substantial number of false-positive patients who are not actually at risk for psychotic disorder and the declining transition risk over the recent years remain.¹² An additional concern is that there is still the danger that people meeting the criteria will be incorrectly conceptualized as being on the psychosis spectrum and that an irreversible lifelong underlying “process” has started.^{12,150} Unintended consequences might then ensue, including stigma across different settings and cultures of care, dis-

Table 4. Treatment Guidelines for the Psychosis High-Risk State Proposed by Different International Organizations

Organization	Recommendation
American Psychiatric Association	“Careful assessment and frequent monitoring”
Canadian Psychiatric Association	“Should be offered monitoring”
Royal Australian and New Zealand College of Psychiatrists	“Antipsychotic medication not normally prescribed unless symptoms are directly associated with risk of self-harm or aggression”
Italian Institute of Health	“Use of antipsychotic medication is doubtful, behavioral cognitive treatment is recommended”
German Association for Psychiatry, Psychotherapy, and Neurology	“Continuous care and follow-up; if relevant symptoms reaching the level of a disorder occur, CBT and psychotherapy should be offered; if psychotic symptoms emerge antipsychotics should be offered”

Abbreviation: CBT indicates cognitive behavior therapy.

crimination, and unnecessary treatment.^{12,15} In particular, antipsychotic drugs (which may have significant effects on the brain¹⁵¹) may be used, despite these medications not being recommended in any clinical guidelines for the treatment of HR individuals (see **Table 4**).¹⁵² Diagnostic creep may occur, resulting in lowering of the HR threshold and a subsequent reduction in transition risk.¹² Finally, we may not yet know enough about factors in addition to the HR criteria that potentially increase the risk

of transition. Ironically, codification of the HR state may actually reduce this necessary research in the area.¹⁵ The alternative option would be to rely on cross-diagnostic staging or a risk stratification approach, which considers the varying severity of the psychosis risk states and has the connotation that each stage may remit and not progress with optimum and timely intervention.¹⁵³ This approach is likely to be less stigmatizing but requires more research to better define the stages.¹⁵³

COMMENT

Two decades of research into the prodromal phase of first-episode psychosis has brought important new knowledge. Nevertheless, many questions remain unanswered, and important challenges are still ahead. First, although there are indications that HR individuals show psychopathologic, functional, neurocognitive, and structural brain abnormalities, it is unclear to what extent these findings reflect psychiatric distress in general or are unique features associated with being on the path to a full-blown psychotic disorder. Thus, more longitudinal research comparing individuals who develop psychotic disorder with those who do not is still needed. In addition, the inclusion of other psychiatric groups as controls would help distinguish between general psychiatric symptoms and those specific to the HR state. Second, there is a need to recognize the importance of and to investigate outcomes other than schizophreniform psychosis. The focus to date has been on positive symptoms, both in terms of the inclusion criteria for the HR state and the definition of transition to psychoses. However, there is increasing evidence that negative symptoms¹⁵⁴ and the level of cognitive and social functioning may also be meaningful measures of clinical outcomes. At present, HR individuals with poor social and role function, neurocognitive impairments, and high levels of negative symptoms may still be classified as “nontransitions” because their positive symptoms have not reached the conventional threshold for frank psychosis. Thus, these outcomes may be more relevant to an underlying schizophrenia construct than to positive symptoms alone.^{71,154} It is also important to ascertain whether the HR criteria detect people at risk for other nonpsychotic disorders. Third, children, adolescents, and adults may need to be considered separately in terms of presenting features, predictors, and treatment needs given their different developmental stages. Fourth, we may need to refine our thinking around trait and state risk factors for the disorder. For example, do certain neurocognitive abnormalities that are milder in HR individuals than in psychotic individuals represent state risk factors that will deteriorate further with progression of illness? Or is their intermediate nature due to the HR sample consisting of some people at risk and some not at risk? It is also important to characterize the heterogeneity of the HR subgroups as we do not know whether patients with GRD, BLIP, APS, or BS criteria have differences in neurobiological features and outcome. The fifth challenge is to test what we have learned so far in order to develop and evaluate interventions that can delay, ameliorate, or even pre-

vent psychosis onset and illness progression or that can prevent comorbidity of other psychiatric disorders.¹⁵⁵ For example, given evidence of social cognitive deficits in HR patients,¹⁵⁶ could therapies addressing emotion recognition be effective? Replication of the finding that fish oil may prevent psychosis⁸ is needed; antidepressants,¹⁵⁷ mood stabilizers,¹⁵⁸ and neuroprotective factors,⁴⁴ such as *N*-acetyl cysteine,¹⁵⁹ may also have potential benefits. Future research could also identify potential critical intervention points where success may alter the life course of illness. Sixth, provision of services to HR individuals across different cultures and mental health structures needs consideration. Different models of service will result in different populations seeking help. An HR service that is co-located with a psychosis service may be expected to receive referrals that have a different transition risk than one located more in the community or developed as part of a general youth service, although the latter would reduce stigma more effectively. Thus, treatment models must be tailored toward the presenting problems and the expected transition risk. Initial treatment guidelines proposed by various international organizations are summarized in Table 4.

In summary, the relatively new field of HR research in psychosis is exciting. It has the potential to shed light on the development of major psychotic disorders and to alter their course. It also provides a rationale for service provision to those in need of help who could not previously access it and the possibility of changing trajectories for those with vulnerability to psychotic illness. Challenges remain and we must be mindful of premature intellectual closure in the area. There is still much work to be done.

Submitted for Publication: December 20, 2011; final revision received February 29, 2012; accepted April 9, 2012.
Published Online: November 19, 2012. doi:10.1001/jamapsychiatry.2012.596

Author Affiliations: Departments of Psychosis Studies (Drs Fusar-Poli, Valmaggia, Bonoldi, and McGuire) and Psychology (Dr Valmaggia), King's College London, London, United Kingdom; OASIS team for prodromal psychosis, NHS SLAM Foundation Trust, London (Drs Fusar-Poli, Valmaggia, Bonoldi, and McGuire); Department of Psychiatry, University of Basel, Basel, Switzerland (Drs Borgwardt and Riecher-Rössler); Department of Psychiatry and Psychotherapy, University of Cologne, Cologne, Germany (Drs Bechdolf, Ruhrmann, and Klosterkötter); Department of Psychiatry, University of Calgary, Calgary, Alberta, Canada (Dr Addington); University Hospital of Child and Adolescent Psychiatry, University of Bern, Bern, Switzerland (Dr Schulze-Lutter); Beth Israel Deaconess Medical Center and Harvard Medical School, Boston, Massachusetts (Drs Keshavan and Seidman); Melbourne Neuropsychiatry Centre, Department of Psychiatry, The University of Melbourne and Melbourne Health, Melbourne, Australia (Dr Wood); School of Psychology, University of Birmingham, Birmingham, United Kingdom (Drs Wood and Birchwood); Department of Psychiatry, Harvard Medical School, Massachusetts General Hospital, Boston (Dr Seidman); Semel Institute for Neuroscience and Human Behavior, University

of California, Los Angeles (Dr Cannon); Department of Early Psychosis, Academic Medical Center, Amsterdam, the Netherlands (Drs Velthorst and De Haan); Department of Psychiatry Research, The Zucker Hillside Hospital, New York, New York (Dr Cornblatt); Yale University School of Medicine, New Haven, Connecticut (Dr McGlashan); Maryland Psychiatric Research Center, University of Maryland School of Medicine, Baltimore (Dr Carpenter); and Orygen Youth Health Research Centre, University of Melbourne, Melbourne (Drs McGorry and Yung).

Correspondence: Paolo Fusar-Poli, MD, PhD, Department of Psychosis Studies, Institute of Psychiatry PO63, De Crespigny Park, SE58AF, London, United Kingdom (p.fusar@libero.it).

Conflict of Interest Disclosures: None reported.

Online-Only Material: The eAppendix and eFigure are available at <http://www.jamapsych.com>.

Additional Information: We dedicate the present work to professor Gerd Huber, pioneer researcher in the HR state for psychosis. At the time this article was released, a final decision was reached regarding the inclusion of APS as a new *DSM-5* category, with a recommendation for APS to be in Section 3 for research and further study rather than in the main text.¹⁶⁰

REFERENCES

- Klosterkötter JGG, Huber G, Wieneke A, Steinmeyer EM, Schultze-Lutter F. Evaluation of the Bonn Scale for the Assessment of Basic Symptoms: BSABS as an instrument for the assessment of schizophrenia proneness: a review of recent findings. *Neurol Psychiatry Brain Res.* 1997;5:137-150.
- Schultze-Lutter F, Schimmelmann BG, Ruhrmann S. The near Babylonian speech confusion in early detection of psychosis. *Schizophr Bull.* 2011;37(4):653-655.
- Fusar-Poli P, Borgwardt S, McGuire P. *Vulnerability to Psychosis: From Neurosciences to Psychopathology.* London, United Kingdom: Psychology Press; 2011.
- Fusar-Poli P, Yung AR. Should attenuated psychosis syndrome be included in *DSM5*? *Lancet.* 2012;379(9816):591-592.
- Yung AR, Phillips LJ, Yuen HP, Francey SM, McFarlane CA, Hallgren M, McGorry PD. Psychosis prediction: 12-month follow up of a high-risk ("prodromal") group. *Schizophr Res.* 2003;60(1):21-32.
- McGlashan TH, Zipursky RB, Perkins D, Addington J, Miller T, Woods SW, Hawkins KA, Hoffman RE, Preda A, Epstein I, Addington D, Lindborg S, Trzaskoma Q, Tohen M, Breier A. Randomized, double-blind trial of olanzapine versus placebo in patients prodromally symptomatic for psychosis. *Am J Psychiatry.* 2006;163(5):790-799.
- McGorry PD, Yung AR, Phillips LJ, Yuen HP, Francey S, Cosgrave EM, Germano D, Bravin J, McDonald T, Blair A, Adlard S, Jackson H. Randomized controlled trial of interventions designed to reduce the risk of progression to first-episode psychosis in a clinical sample with subthreshold symptoms. *Arch Gen Psychiatry.* 2002;59(10):921-928.
- Amminger GP, Schäfer MR, Papageorgiou K, Klier CM, Cotton SM, Harrigan SM, Mackinnon A, McGorry PD, Berger GE. Long-chain ω -3 fatty acids for indicated prevention of psychotic disorders: a randomized, placebo-controlled trial. *Arch Gen Psychiatry.* 2010;67(2):146-154.
- Morrison AP, French P, Walford L, Lewis SW, Kilcommons A, Green J, Parker S, Bental RP. Cognitive therapy for the prevention of psychosis in people at ultra-high risk: randomised controlled trial. *Br J Psychiatry.* 2004;185:291-297.
- Ruhrmann S, Schultze-Lutter F, Klosterkötter J. Probably at-risk, but certainly ill: advocating the introduction of a psychosis spectrum disorder in *DSM-V*. *Schizophr Res.* 2010;120(1-3):23-37.
- Carpenter WT Jr. Criticism of the *DSM-V* risk syndrome: a rebuttal. *Cogn Neuropsychiatry.* 2011;16(2):101-106.
- Yung AR, Nelson B, Thompson AD, Wood SJ. Should a "Risk Syndrome for Psychosis" be included in the *DSM-V*? *Schizophr Res.* 2010;120(1-3):7-15.
- Corcoran CM, First MB, Cornblatt B. The psychosis risk syndrome and its proposed inclusion in the *DSM-V*: a risk-benefit analysis. *Schizophr Res.* 2010;120(1-3):16-22.
- Arango C. Attenuated psychotic symptoms syndrome: how it may affect child and adolescent psychiatry. *Eur Child Adolesc Psychiatry.* 2011;20(2):67-70.
- Drake RJ, Lewis SW. Valuing prodromal psychosis: what do we get and what is the price? *Schizophr Res.* 2010;120(1-3):38-41.
- Mrazek P, Haggerty H. *Reducing Risks for Mental Disorders: Frontiers for Preventive Research.* Washington, DC: Academy Press; 1994.
- McGorry PD, Nelson B, Amminger G, Bechdolf A, Francey SM, Berger G, Riecher-Rössler A, Klosterkötter J, Ruhrmann S, Schultze-Lutter F, Nordentoft M, Hickie I, McGuire P, Berk M, Chen EY, Keshavan MS, Yung AR. Intervention in individuals at ultra-high risk for psychosis: a review and future directions. *J Clin Psychiatry.* 2009;70(9):1206-1212.
- Sullivan HS. The onset of schizophrenia: 1927. *Am J Psychiatry.* 1994;151(6)(suppl):134-139.
- Mayer-Gross W. Die Klinik der Schizophrenie. In: Bunke O, ed. *Handbuch der Geisteskrankheiten.* Vol IX. Berlin, Germany: Springer; 1932.
- Huber G, Gross G. The concept of basic symptoms in schizophrenic and schizoaffective psychoses. *Recent Prog Med.* 1989;80(12):646-652.
- Riecher A, Maurer K, Löffler W, Fätkenheuer B, an der Heiden W, Häfner H. Schizophrenia: a disease of young single males? preliminary results from an investigation on a representative cohort admitted to hospital for the first time. *Eur Arch Psychiatry Neurol Sci.* 1989;239(3):210-212.
- Häfner H, Riecher-Rössler A, Hambrecht M, Maurer K, Meissner S, Schmidtke A, Fätkenheuer B, Löffler W, van der Heiden W. IRAOS: an instrument for the assessment of onset and early course of schizophrenia. *Schizophr Res.* 1992;6(3):209-223.
- Häfner H, Maurer K, Löffler W, an der Heiden W, Munk-Jørgensen P, Hambrecht M, Riecher-Rössler A. The ABC Schizophrenia Study: a preliminary overview of the results. *Soc Psychiatry Psychiatr Epidemiol.* 1998;33(8):380-386.
- Häfner H, Maurer K, Löffler W, Riecher-Rössler A. The influence of age and sex on the onset and early course of schizophrenia. *Br J Psychiatry.* 1993;162:80-86.
- Häfner H, Riecher-Rössler A, Maurer K, Fätkenheuer B, Löffler W. First onset and early symptomatology of schizophrenia: a chapter of epidemiological and neurobiological research into age and sex differences. *Eur Arch Psychiatry Clin Neurosci.* 1992;242(2-3):109-118.
- Jackson HJ, McGorry PD, McKenzie D. The reliability of *DSM-III* prodromal symptoms in first-episode psychotic patients. *Acta Psychiatr Scand.* 1994;90(5):375-378.
- Yung AR, McGorry PD, McFarlane CA, Jackson HJ, Patton GC, Rakkar A. Monitoring and care of young people at incipient risk of psychosis. *Schizophr Bull.* 1996;22(2):283-303.
- McGlashan TH. Early detection and intervention in schizophrenia: editor's introduction. *Schizophr Bull.* 1996;22(2):197-199.
- Yung AR, McGorry PD. The prodromal phase of first-episode psychosis: past and current conceptualizations. *Schizophr Bull.* 1996;22(2):353-370.
- McGlashan TH. Early detection and intervention in schizophrenia: research. *Schizophr Bull.* 1996;22(2):327-345.
- McGorry PD, Edwards J, Mihalopoulos C, Harrigan SM, Jackson HJ. EPPIC: an evolving system of early detection and optimal management. *Schizophr Bull.* 1996;22(2):305-326.
- Falloon IR, Kydd RR, Coverdale JH, Laidlaw TM. Early detection and intervention for initial episodes of schizophrenia. *Schizophr Bull.* 1996;22(2):271-282.
- Larsen TK, McGlashan TH, Moe LC. First-episode schizophrenia, I: early course parameters. *Schizophr Bull.* 1996;22(2):241-256.
- Olin SC, Mednick SA. Risk factors of psychosis: identifying vulnerable populations premonitory. *Schizophr Bull.* 1996;22(2):223-240.
- McGlashan TH, Johannessen JO. Early detection and intervention with schizophrenia: rationale. *Schizophr Bull.* 1996;22(2):201-222.
- Miller TJ, McGlashan TH, Woods SW, Stein K, Driesen N, Corcoran CM, Hoffman R, Davidson L. Symptom assessment in schizophrenic prodromal states. *Psychiatr Q.* 1999;70(4):273-287.
- McGlashan T, Walsh B, Woods S. *The Psychosis-Risk Syndrome: Handbook for Diagnosis and Follow-Up.* New York, NY: Oxford University Press; 2010.
- Klosterkötter J, Ebel H, Schultze-Lutter F, Steinmeyer EM. Diagnostic validity of basic symptoms. *Eur Arch Psychiatry Clin Neurosci.* 1996;246(3):147-154.
- Schultze-Lutter F, Ruhrmann S, Fusar-Poli P, Bechdolf A, Schimmelmann BG, Klosterkötter J. Basic symptoms and the prediction of first-episode psychosis. *Curr Pharm Des.* 2012;18(4):351-357.
- Cannon TD, Cornblatt B, McGorry P. The empirical status of the ultra high-risk (prodromal) research paradigm. *Schizophr Bull.* 2007;33(3):661-664.
- Olsen KA, Rosenbaum B. Prospective investigations of the prodromal state of schizophrenia: assessment instruments. *Acta Psychiatr Scand.* 2006;113(4):273-282.
- Yung AR, Stanford C, Cosgrave E, Killackey E, Phillips L, Nelson B, McGorry PD. Testing the Ultra High Risk (prodromal) criteria for the prediction of psychosis in a clinical sample of young people. *Schizophr Res.* 2006;84(1):57-66.
- Carr V, Halpin S, Lau N, O'Brien S, Beckmann J, Lewin T. A risk factor screening and assessment protocol for schizophrenia and related psychosis. *Aust N Z J Psychiatry.* 2000;34(suppl):S170-S180.

44. Cornblatt BA, Lencz T, Smith CW, Correll CU, Auther AM, Nakayama E. The schizophrenia prodrome revisited: a neurodevelopmental perspective. *Schizophr Bull.* 2003;29(4):633-651.
45. Ruhrmann S, Schultze-Lutter F, Salokangas RK, Heinimaa M, Linszen D, Dingemans P, Birchwood M, Patterson P, Juckel G, Heinz A, Morrison A, Lewis S, von Reventlow HG, Klosterkötter J. Prediction of psychosis in adolescents and young adults at high risk: results from the prospective European Prediction of Psychosis Study. *Arch Gen Psychiatry.* 2010;67(3):241-251.
46. Broome MR, Woolley JB, Johns LC, Valmaggia LR, Tabraham P, Gafoor R, Bramon E, McGuire PK. Outreach and support in south London (OASIS): implementation of a clinical service for prodromal psychosis and the at risk mental state. *Eur Psychiatry.* 2005;20(5-6):372-378.
47. Ruhrmann S, Schultze-Lutter F, Klosterkötter J. Early detection and intervention in the initial prodromal phase of schizophrenia. *Pharmacopsychiatry.* 2003;36(suppl 3):S162-S167.
48. Simon AE, Dvorsky DN, Boesch J, Roth B, Isler E, Schueler P, Petrali C, Umbricht D. Defining subjects at risk for psychosis: a comparison of two approaches. *Schizophr Res.* 2006;81(1):83-90.
49. Yung AR, Yuen HP, McGorry PD, Phillips LJ, Kelly D, Dell'Olivo M, Francey SM, Cosgrave EM, Killackey E, Stanford C, Godfrey K, Buckley J. Mapping the onset of psychosis: the Comprehensive Assessment of At-Risk Mental States. *Aust N Z J Psychiatry.* 2005;39(11-12):964-971.
50. Riecher-Rössler A, Gschwandtner U, Aston J, Borgwardt S, Drewe M, Fuhr P, Pflüger M, Radü W, Schindler Ch, Stieglitz RD. The Basel early-detection-of-psychosis (FEPSY)-study: design and preliminary results. *Acta Psychiatr Scand.* 2007;115(2):114-125.
51. Riecher-Rössler A, Aston J, Ventura J, Merlo M, Borgwardt S, Gschwandtner U, Stieglitz RD. The Basel Screening Instrument for Psychosis (BSIP): development, structure, reliability and validity [in German]. *Fortschr Neurol Psychiatr.* 2008;76(4):207-216.
52. Miller TJ, McGlashan TH, Rosen JL, Cadenhead K, Cannon T, Ventura J, McFarlane W, Perkins DO, Pearlson GD, Woods SW. Prodromal assessment with the structured interview for prodromal syndromes and the scale of prodromal symptoms: predictive validity, interrater reliability, and training to reliability. *Schizophr Bull.* 2003;29(4):703-715.
53. Loewy RL, Bearden CE, Johnson JK, Raine A, Cannon TD. The Prodromal Questionnaire (PQ): preliminary validation of a self-report screening measure for prodromal and psychotic syndromes. *Schizophr Res.* 2005;79(1):117-125.
54. Schultze-Lutter F. Subjective symptoms of schizophrenia in research and the clinic: the basic symptom concept. *Schizophr Bull.* 2009;35(1):5-8.
55. Klosterkötter J, Hellmich M, Steinmeyer EM, Schultze-Lutter F. Diagnosing schizophrenia in the initial prodromal phase. *Arch Gen Psychiatry.* 2001;58(2):158-164.
56. Schultze-Lutter F, Klosterkötter J, Picker H, Steinmeyer E, Ruhrmann S. Predicting first-episode psychosis by basic symptoms criteria. *Clin Neuropsychiatry.* 2007;4(1):11-22.
57. Bechdolf A, Wagner M, Ruhrmann S, Harrigan S, Veith V, Pukrop R, Brockhaus-Dumke A, Berning J, Janssen B, Decker P, Bottlender R, Maurer K, Moller H, Gaebel W, Hafner H, Maier W, Klosterkötter J. Preventing progression to first-episode psychosis in early initial prodromal states. *Br J Psychiatry.* 2012;200(1):22-29.
58. Ziermans TB, Schothorst PF, Sprong M, van Engeland H. Transition and remission in adolescents at ultra-high risk for psychosis. *Schizophr Res.* 2011;126(1-3):58-64.
59. Schultze-Lutter F, Addington J, Ruhrmann S, Klosterkötter J. *Schizophrenia Proneness Instrument, Adult Version (SPI-A)*. Rome, Italy: Giovanni Fiorito Editore; 2007.
60. Schultze-Lutter F, Marshall M, Koch E. *Schizophrenia Proneness Instrument, Child and Youth Version (SPI-CY), Extended English Translation*. Rome, Italy: Giovanni Fiorito Editore; 2012.
61. Keshavan MS, DeLisi LE, Seidman LJ. Early and broadly defined psychosis risk mental states. *Schizophr Res.* 2011;126(1-3):1-10.
62. Klosterkötter J, Schultze-Lutter F, Bechdolf A, Ruhrmann S. Prediction and prevention of schizophrenia: what has been achieved and where to go next? *World Psychiatry.* 2011;10(3):165-174.
63. Fusar-Poli P, Borgwardt S, Valmaggia L. Heterogeneity in the assessment of the at-risk mental state for psychosis [letter]. *Psychiatr Serv.* 2008;59(7):813.
64. Nelson B, Fusar-Poli P, Yung AR. Can we detect psychotic-like experiences in the general population? *Curr Pharm Des.* 2012;18(4):376-385.
65. Ochoa S, Haro JM, Torres JV, Pinto-Meza A, Palacín C, Bernal M, Brugha T, Prät B, Usall J, Alonso J, Autonell J. What is the relative importance of self reported psychotic symptoms in epidemiological studies? results from the ESEMeD-Catalonia Study. *Schizophr Res.* 2008;102(1-3):261-269.
66. Granö N, Karjalainen M, Itkonen A, Anto J, Edlund V, Heinimaa M, Roine M. Differential results between self-report and interview-based ratings of risk symptoms of psychosis. *Early Interv Psychiatry.* 2011;5(4):309-314.
67. van Os J, Linscott RJ, Myin-Germeys I, Delespaul P, Krabbendam L. A systematic review and meta-analysis of the psychosis continuum: evidence for a psychosis proneness-persistence-impairment model of psychotic disorder. *Psychol Med.* 2009;39(2):179-195.
68. Schimmelmann B, Walger P, Schultze-Lutter F. The significance of at-risk symptoms of psychosis in children and adolescents. *Can J Psychiatry.* In press.
69. Schimmelmann BG, Michel C, Schaffner N, Schultze-Lutter F. What percentage of people in the general population satisfies the current clinical at-risk criteria of psychosis? *Schizophr Res.* 2011;125(1):99-100.
70. Kelleher I, Murtagh A, Molloy C, Roddy S, Clarke MC, Harley M, Cannon M. Identification and characterization of prodromal risk syndromes in young adolescents in the community: a population-based clinical interview study. *Schizophr Bull.* 2011;38(2):239-246.
71. Yung AR, Nelson B, Thompson A, Wood SJ. The psychosis threshold in Ultra High Risk (prodromal) research: is it valid? *Schizophr Res.* 2010;120(1-3):1-6.
72. Yung AR, Phillips LJ, McGorry PD, McFarlane CA, Francey S, Harrigan S, Patton GC, Jackson HJ. Prediction of psychosis: a step towards indicated prevention of schizophrenia. *Br J Psychiatry Suppl.* 1998;172(33):14-20.
73. Cannon TD, Cadenhead K, Cornblatt B, Woods SW, Addington J, Walker E, Seidman LJ, Perkins D, Tsuang M, McGlashan T, Heinssen R. Prediction of psychosis in youth at high clinical risk: a multisite longitudinal study in North America. *Arch Gen Psychiatry.* 2008;65(1):28-37.
74. Fusar-Poli P, Bonoldi I, Yung AR, Borgwardt S, Kempton M, Barale F, Caverzasi E, McGuire P. Predicting psychosis: meta-analysis of transition outcomes in individuals at high clinical risk. *Arch Gen Psychiatry.* 2012;69(3):220-229.
75. Fusar-Poli P, Bechdolf A, Taylor MJ, Bonoldi I, Carpenter WT, Yung AR, McGuire P. At risk for schizophrenic or affective psychoses? a meta-analysis of DSM/ICD diagnostic outcomes in individuals at high clinical risk [published online May 15, 2012]. *Schizophr Bull.* doi:10.1093/schbul/sbs060.
76. Yung AR, Stanford C, Cosgrave E, Killackey E, Phillips L, Nelson B, McGorry PD. Testing the Ultra High Risk (prodromal) criteria for the prediction of psychosis in a clinical sample of young people. *Schizophr Res.* 2006;84(1):57-66.
77. Simon AE, Velthorst E, Nieman DH, Linszen D, Umbricht D, de Haan L. Ultra high-risk state for psychosis and non-transition: a systematic review. *Schizophr Res.* 2011;132(1):8-17.
78. Addington J, Cornblatt BA, Cadenhead KS, Cannon TD, McGlashan TH, Perkins DO, Seidman LJ, Tsuang MT, Walker EF, Woods SW, Heinssen R. At clinical high risk for psychosis: outcome for nonconverters. *Am J Psychiatry.* 2011;168(8):800-805.
79. Schultze-Lutter F, Ruhrmann S, Berning J, Maier W, Klosterkötter J. Basic symptoms and ultrahigh risk criteria: symptom development in the initial prodromal state. *Schizophr Bull.* 2010;36(1):182-191.
80. Yung A, Nelson B, Yuen H, Spiliotacopoulos D, Lin A, Simmonds HA, Bruxner A, Broussard C, Thompson A, McGorry P. Long term outcome in an ultra high risk ("prodromal") group. *Schizophr Bull.* 2011;37:22-23.
81. Yung AR, Nelson B, Stanford C, Simmonds MB, Cosgrave EM, Killackey E, Phillips LJ, Bechdolf A, Buckley J, McGorry PD. Validation of "prodromal" criteria to detect individuals at ultra high risk of psychosis: 2 year follow-up. *Schizophr Res.* 2008;105(1-3):10-17.
82. Woods SW, Addington J, Cadenhead KS, Cannon TD, Cornblatt BA, Heinssen R, Perkins DO, Seidman LJ, Tsuang MT, Walker EF, McGlashan TH. Validity of the prodromal risk syndrome for first psychosis: findings from the North American Prodrome Longitudinal Study. *Schizophr Bull.* 2009;35(5):894-908.
83. Bechdolf A, Pukrop R, Köhn D, Tschinkel S, Veith V, Schultze-Lutter F, Ruhrmann S, Geyer C, Pohlmann B, Klosterkötter J. Subjective quality of life in subjects at risk for a first episode of psychosis: a comparison with first episode schizophrenia patients and healthy controls. *Schizophr Res.* 2005;79(1):137-143.
84. Addington J, Penn D, Woods SW, Addington D, Perkins DO. Social functioning in individuals at clinical high risk for psychosis. *Schizophr Res.* 2008;99(1-3):119-124.
85. Lencz T, Smith CW, Auther A, Correll CU, Cornblatt B. Nonspecific and attenuated negative symptoms in patients at clinical high-risk for schizophrenia. *Schizophr Res.* 2004;68(1):37-48.
86. Velthorst E, Nieman DH, Linszen D, Becker H, de Haan L, Dingemans PM, Birchwood M, Patterson P, Salokangas RK, Heinimaa M, Heinz A, Juckel G, von Reventlow HG, French P, Stevens H, Schultze-Lutter F, Klosterkötter J, Ruhrmann S. Disability in people clinically at high risk of psychosis. *Br J Psychiatry.* 2010;197(4):278-284.
87. Seidman LJ, Giuliano AJ, Meyer EC, Addington J, Cadenhead KS, Cannon TD, McGlashan TH, Perkins DO, Tsuang MT, Walker EF, Woods SW, Bearden CE, Christensen BK, Hawkins K, Heaton R, Keefe RS, Heinssen R, Cornblatt BA; North American Prodrome Longitudinal Study (NAPLS) Group. Neuropsychology of the prodrome to psychosis in the NAPLS consortium: relationship to family history and conversion to psychosis. *Arch Gen Psychiatry.* 2010;67(6):578-588.
88. Fusar-Poli P, Byrne M, Valmaggia L, Day F, Tabraham P, Johns L, McGuire P. Social dysfunction predicts two years clinical outcome in people at ultra high risk for psychosis. *J Psychiatr Res.* 2010;44(5):294-301.
89. Cornblatt BA, Carrión RE, Addington J, Seidman L, Walker EF, Cannon TD, Cadenhead KS, McGlashan TH, Perkins DO, Tsuang MT, Woods SW, Heinssen R, Lencz

- T. Risk factors for psychosis: impaired social and role functioning [published online November 10, 2011]. *Schizophr Bull.* doi:10.1093/schbul/sbr136.
90. Ruhrmann S, Paruch J, Bechdorf A, Pukrop R, Wagner M, Berning J, Schultze-Lutter F, Janssen B, Gaebel W, Möller HJ, Maier W, Klosterkötter J. Reduced subjective quality of life in persons at risk for psychosis. *Acta Psychiatr Scand.* 2008; 117(5):357-368.
 91. Hutton P, Bowe S, Parker S, Ford S. Prevalence of suicide risk factors in people at ultra-high risk of developing psychosis: a service audit. *Early Interv Psychiatry.* 2011;5(4):375-380.
 92. Fusar-Poli P, Deste G, Smieskova R, Barlati G, Yung AR, Howes O, Stieglitz R, McGuire P, Borgwardt S. Cognitive functioning in prodromal psychosis: a meta-analysis. *Arch Gen Psychiatry.* 2012;69(6):1-10.
 93. Woodberry KA, Giuliano AJ, Seidman LJ. Premorbid IQ in schizophrenia: a meta-analytic review. *Am J Psychiatry.* 2008;165(5):579-587.
 94. Giuliano AJ, Li H, Mesholam-Gately RI, Sorenson SM, Woodberry KA, Seidman LJ. Neurocognition in the psychosis risk syndrome: a quantitative and qualitative review. *Curr Pharm Des.* 2012;18(4):399-415.
 95. Lin A, Wood SJ, Nelson B, Brewer WJ, Spiliotacopoulos D, Bruxner A, Broussard C, Pantelis C, Yung AR. Neurocognitive predictors of functional outcome two to 13 years after identification as ultra-high risk for psychosis. *Schizophr Res.* 2011; 132(1):1-7.
 96. Niendam TA, Jalbrzikowski M, Bearden CE. Exploring predictors of outcome in the psychosis prodrome: implications for early identification and intervention. *Neuropsychol Rev.* 2009;19(3):280-293.
 97. Carrion RE, Goldberg TE, McLaughlin D, Auther AM, Correll CU, Cornblatt BA. Impact of neurocognition on social and role functioning in individuals at clinical high risk for psychosis. *Am J Psychiatry.* 2011;168(8):806-813.
 98. Dragt S, Nieman DH, Veltman D, Becker HE, van de Fliert R, de Haan L, Linszen DH. Environmental factors and social adjustment as predictors of a first psychosis in subjects at ultra high risk. *Schizophr Res.* 2011;125(1):69-76.
 99. McGuire P, Howes OD, Stone J, Fusar-Poli P. Functional neuroimaging in schizophrenia: diagnosis and drug discovery. *Trends Pharmacol Sci.* 2008;29(2): 91-98.
 100. Phillips LJ, Velakoulis D, Pantelis C, Wood S, Yuen HP, Yung AR, Desmond P, Brewer W, McGorry PD. Non-reduction in hippocampal volume is associated with higher risk of psychosis. *Schizophr Res.* 2002;58(2-3):145-158.
 101. Velakoulis D, Wood SJ, Wong MT, McGorry PD, Yung A, Phillips L, Smith D, Brewer W, Proffitt T, Desmond P, Pantelis C. Hippocampal and amygdala volumes according to psychosis stage and diagnosis: a magnetic resonance imaging study of chronic schizophrenia, first-episode psychosis, and ultra-high-risk individuals. *Arch Gen Psychiatry.* 2006;63(2):139-149.
 102. Yücel M, Wood SJ, Phillips LJ, Stuart GW, Smith DJ, Yung A, Velakoulis D, McGorry PD, Pantelis C. Morphology of the anterior cingulate cortex in young men at ultra-high risk of developing a psychotic illness. *Br J Psychiatry.* 2003; 182:518-524.
 103. Wood SJ, Yung AR, McGorry PD, Pantelis C. Neuroimaging and treatment evidence for clinical staging in psychotic disorders: from the at-risk mental state to chronic schizophrenia. *Biol Psychiatry.* 2011;70(7):619-625.
 104. Pantelis C, Velakoulis D, McGorry PD, Wood SJ, Suckling J, Phillips LJ, Yung AR, Bullmore ET, Brewer W, Soulsby B, Desmond P, McGuire PK. Neuroanatomical abnormalities before and after onset of psychosis: a cross-sectional and longitudinal MRI comparison. *Lancet.* 2003;361(9354):281-288.
 105. Smieskova R, Fusar-Poli P, Allen P, Bendfeldt K, Stieglitz RD, Drewe J, Radue EW, McGuire PK, Riecher-Rössler A, Borgwardt SJ. Neuroimaging predictors of transition to psychosis: a systematic review and meta-analysis. *Neurosci Biobehav Rev.* 2010;34(8):1207-1222.
 106. Mechelli A, Riecher-Rössler A, Meisenzahl EM, Tognin S, Wood SJ, Borgwardt SJ, Koutsouleris N, Yung AR, Stone JM, Phillips LJ, McGorry PD, Valli I, Velakoulis D, Woolley J, Pantelis C, McGuire P. Neuroanatomical abnormalities that predate the onset of psychosis: a multicenter study. *Arch Gen Psychiatry.* 2011; 68(5):489-495.
 107. Koutsouleris N, Meisenzahl EM, Davatzikos C, Bottlender R, Frodl T, Scheuerecker J, Schmitt G, Zetsche T, Decker P, Reiser M, Möller HJ, Gaser C. Use of neuroanatomical pattern classification to identify subjects in at-risk mental states of psychosis and predict disease transition. *Arch Gen Psychiatry.* 2009;66 (7):700-712.
 108. Broome MR, Matthiasson P, Fusar-Poli P, Woolley JB, Johns LC, Tabraham P, Bramon E, Valmaggia L, Williams SC, Brammer MJ, Chitnis X, McGuire PK. Neural correlates of executive function and working memory in the "at-risk mental state." *Br J Psychiatry.* 2009;194(1):25-33.
 109. Morey RA, Inan S, Mitchell TV, Perkins DO, Lieberman JA, Belger A. Imaging frontostriatal function in ultra-high-risk, early, and chronic schizophrenia during executive processing. *Arch Gen Psychiatry.* 2005;62(3):254-262.
 110. Stone JM, Day F, Tsagaraki H, Valli I, McLean MA, Lythgoe DJ, O'Gorman RL, Barker GJ, McGuire PK, OASIS. Glutamate dysfunction in people with prodromal symptoms of psychosis: relationship to gray matter volume. *Biol Psychiatry.* 2009;66(6):533-539.
 111. Wood SJ, Berger G, Velakoulis D, Phillips LJ, McGorry PD, Yung AR, Desmond P, Pantelis C. Proton magnetic resonance spectroscopy in first episode psychosis and ultra high-risk individuals. *Schizophr Bull.* 2003;29(4):831-843.
 112. Jessen F, Scherk H, Träber F, Theyson S, Berning J, Tepest R, Falkai P, Schild HH, Maier W, Wagner M, Block W. Proton magnetic resonance spectroscopy in subjects at risk for schizophrenia. *Schizophr Res.* 2006;87(1-3):81-88.
 113. Howes OD, Montgomery AJ, Asselin MC, Murray RM, Valli I, Tabraham P, Bramon-Bosch E, Valmaggia L, Johns L, Broome M, McGuire PK, Grasby PM. Elevated striatal dopamine function linked to prodromal signs of schizophrenia. *Arch Gen Psychiatry.* 2009;66(1):13-20.
 114. Howes OD, Bose SK, Turkheimer F, Valli I, Egerton A, Valmaggia LR, Murray RM, McGuire P. Dopamine synthesis capacity before onset of psychosis: a prospective [18F]-DOPA PET imaging study. *Am J Psychiatry.* 2011;168(12):1311-1317.
 115. Fusar-Poli P, Meyer-Lindenberg A. Striatal presynaptic dopamine in schizophrenia, part II: meta-analysis of [¹⁸F][¹¹C]-DOPA PET studies [published online January 26, 2012]. *Schizophr Bull.* doi:10.1093/schbul/sbr180.
 116. Bodatsch M, Ruhrmann S, Wagner M, Müller R, Schultze-Lutter F, Frommann I, Brinkmeyer J, Gaebel W, Maier W, Klosterkötter J, Brockhaus-Dumke A. Prediction of psychosis by mismatch negativity. *Biol Psychiatry.* 2011;69(10): 959-966.
 117. Zimmermann R, Gschwandtner U, Wilhelm FH, Pflueger MO, Riecher-Rössler A, Fuhr P. EEG spectral power and negative symptoms in at-risk individuals predict transition to psychosis. *Schizophr Res.* 2010;123(2-3):208-216.
 118. Fusar-Poli P, Radua J, McGuire P, Borgwardt S. Neuroanatomical maps of psychosis onset: voxel-wise meta-analysis of antipsychotic-naïve VBM studies [published online November 17, 2011]. *Schizophr Bull.* doi:10.1093/schbul/sbr134.
 119. Fusar-Poli P, Borgwardt S, Crescini A, Deste G, Kempton MJ, Lawrie S, McGuire P, Sacchetti E. Neuroanatomy of vulnerability to psychosis: a voxel-based meta-analysis. *Neurosci Biobehav Rev.* 2011;35(5):1175-1185.
 120. Fusar-Poli P, Perez J, Broome M, Borgwardt S, Placentino A, Caverzasi E, Cortesi M, Veggiotti P, Politi P, Barale F, McGuire P. Neurofunctional correlates of vulnerability to psychosis: a systematic review and meta-analysis. *Neurosci Biobehav Rev.* 2007;31(4):465-484.
 121. Howes OD, Montgomery AJ, Asselin MC, Murray RM, Grasby PM, McGuire PK. Molecular imaging studies of the striatal dopaminergic system in psychosis and predictions for the prodromal phase of psychosis. *Br J Psychiatry.* 2007;51: s13-s18.
 122. Stone JM. Imaging the glutamate system in humans: relevance to drug discovery for schizophrenia. *Curr Pharm Des.* 2009;15(22):2594-2602.
 123. Fusar-Poli P, Meyer-Lindenberg A. Striatal presynaptic dopamine in schizophrenia, part I: meta-analysis of dopamine active transporter (DAT) density [published online January 26, 2012]. *Schizophr Bull.* doi:10.1093/schbul/sbr111.
 124. Fusar-Poli P, McGuire P, Borgwardt S. Mapping prodromal psychosis: a critical review of the literature. *Eur Psychiatry.* 2012;27(3):181-191.
 125. Fusar-Poli P, Howes OD, Allen P, Broome M, Valli I, Asselin MC, Montgomery AJ, Grasby PM, McGuire P. Abnormal prefrontal activation directly related to pre-synaptic striatal dopamine dysfunction in people at clinical high risk for psychosis. *Mol Psychiatry.* 2011;16(1):67-75.
 126. Fusar-Poli P, Stone J, Broome M, Valli I, Mechelli A, McLean M, Lythgoe D, O'Gorman R, Barker G, McGuire P. Thalamic glutamate levels predicts cortical response during executive functioning in subjects at high risk for psychosis. *Arch Gen Psychiatry.* 2011;68(9):881-890.
 127. Fusar-Poli P, Howes OD, Allen P, Broome M, Valli I, Asselin MC, Grasby PM, McGuire PK. Abnormal frontostriatal interactions in people with prodromal signs of psychosis: a multimodal imaging study. *Arch Gen Psychiatry.* 2010;67(7):683-691.
 128. Riecher-Rössler A, Pflueger MO, Aston J, Borgwardt SJ, Brewer WJ, Gschwandtner U, Stieglitz RD. Efficacy of using cognitive status in predicting psychosis: a 7-year follow-up. *Biol Psychiatry.* 2009;66(11):1023-1030.
 129. Mason O, Startup M, Halpin S, Schall U, Conrad A, Carr V. Risk factors for transition to first episode psychosis among individuals with "at-risk mental states." *Schizophr Res.* 2004;71(2-3):227-237.
 130. Yung AR, Phillips LJ, Yuen HP, McGorry PD. Risk factors for psychosis in an ultra high-risk group: psychopathology and clinical features. *Schizophr Res.* 2004;67(2-3):131-142.
 131. Thompson A, Nelson B, Yung A. Predictive validity of clinical variables in the "at risk" for psychosis population: international comparisons with results from the North American Prodrome Longitudinal Study. *Schizophr Res.* 2011; 126(1-3):51-57.
 132. Demjaha A, Valmaggia L, Stahl D, Byrne M, McGuire P. Disorganization/cognitive and negative symptom dimensions in the at-risk mental state predict subsequent transition to psychosis. *Schizophr Bull.* 2010;38(2):351-359.
 133. Keshavan MS, Vora A, Montrose D, Diwadkar VA, Sweeney J. Olfactory identification in young relatives at risk for schizophrenia. *Acta Neuropsychiatr.* 2009; 21(3):121-124.
 134. van Tricht MJ, Nieman DH, Koelman JH, Bour LJ, van der Meer JN, van Amelsvoort TA, Linszen DH, de Haan L. Auditory ERP components before and after transition to a first psychotic episode. *Biol Psychol.* 2011;87(3):350-357.

135. Koutsouleris N, Davatzikos C, Bottlender R, Patschurek-Kliche K, Scheuerecker J, Decker P, Gaser C, Möller HJ, Meisenzahl EM. Early recognition and disease prediction in the at-risk mental states for psychosis using neurocognitive pattern classification [published online May 16, 2011]. *Schizophr Bull*. doi:10.1093/schbul/sbr037.
136. Preti A, Cella M. Randomized-controlled trials in people at ultra high risk of psychosis: a review of treatment effectiveness. *Schizophr Res*. 2010;123(1):30-36.
137. Morrison AP, Stewart SL, French P, Bental RP, Birchwood M, Byrne R, Davies LM, Fowler D, Gumley AI, Jones PB, Lewis SW, Murray GK, Patterson P, Dunn G. Early detection and intervention evaluation for people at high-risk of psychosis-2 (EDIE-2): trial rationale, design and baseline characteristics. *Early Interv Psychiatry*. 2011;5(1):24-32.
138. Rietdijk J, Dragt S, Klaassen R, Ising H, Nieman D, Wunderink L, Delespaul P, Cuijpers P, Linszen D, van der Gaag M. A single blind randomized controlled trial of cognitive behavioural therapy in a help-seeking population with an at risk mental state for psychosis: the Dutch Early Detection and Intervention Evaluation (EDIE-NL) trial. *Trials*. 2010;11:30.
139. Bechdolf A, Müller H, Stützer H, Wagner M, Maier W, Lautenschlager M, Heinz A, de Millas W, Janssen B, Gaebel W, Michel TM, Schneider F, Lambert M, Naber D, Brüne M, Krüger-Özgürdal S, Wobrock T, Riedel M, Klosterkötter J; PREVENT Study Group. Rationale and baseline characteristics of PREVENT: a second-generation intervention trial in subjects at-risk (prodromal) of developing first-episode psychosis evaluating cognitive behavior therapy, aripiprazole, and placebo for the prevention of psychosis. *Schizophr Bull*. 2011;37(suppl 2):S111-S121.
140. Yung AR, Phillips JL, Nelson B, Francey S, Panyuan H, Simmons M, Rossi M, Kelly D, Baker K, Amminger GP, Berger G, Thompson A, Thampi A, McGorry PD. Randomized controlled trial of interventions for young people at ultra high risk for psychosis: 6-month analysis. *J Clin Psychiatry*. 2011;72(4):430-440.
141. Addington J, Epstein I, Liu L, French P, Boydell KM, Zipursky RB. A randomized controlled trial of cognitive behavioral therapy for individuals at clinical high risk of psychosis. *Schizophr Res*. 2011;125(1):54-61.
142. Phillips LJ, McGorry PD, Yuen HP, Ward J, Donovan K, Kelly D, Francey SM, Yung AR. Medium term follow-up of a randomized controlled trial of interventions for young people at ultra high risk of psychosis. *Schizophr Res*. 2007;96(1-3):25-33.
143. Morrison AP, French P, Parker S, Roberts M, Stevens H, Bental RP, Lewis SW. Three-year follow-up of a randomized controlled trial of cognitive therapy for the prevention of psychosis in people at ultrahigh risk. *Schizophr Bull*. 2007;33(3):682-687.
144. Korver N, Nieman DH, Becker HE, van de Fliert JR, Dingemans PH, de Haan L, Spiering M, Schmitz N, Linszen DH. Symptomatology and neuropsychological functioning in cannabis using subjects at ultra-high risk for developing psychosis and healthy controls. *Aust N Z J Psychiatry*. 2010;44(3):230-236.
145. Phillips LJ, Cotton S, Mihalopoulos C, Shih S, Yung AR, Carter R, McGorry PD. Cost implications of specific and non-specific treatment for young persons at ultra high risk of developing a first episode of psychosis. *Early Interv Psychiatry*. 2009;3(1):28-34.
146. Valmaggia LR, McCrone P, Knapp M, Woolley JB, Broome MR, Tabraham P, Johns LC, Prescott C, Bramon E, Lappin J, Power P, McGuire PK. Economic impact of early intervention in people at high risk of psychosis. *Psychol Med*. 2009;39(10):1617-1626.
147. Mihalopoulos C, McGorry PD, Carter RC. Is phase-specific, community-oriented treatment of early psychosis an economically viable method of improving outcome? *Acta Psychiatr Scand*. 1999;100(1):47-55.
148. Bosanac P, Patton GC, Castle DJ. Early intervention in psychotic disorders: faith before facts? *Psychol Med*. 2010;40(3):353-358.
149. McGlashan TH, Addington J, Cannon T, Heinimaa M, McGorry P, O'Brien M, Penn D, Perkins D, Salokangas RK, Walsh B, Woods SW, Yung A. Recruitment and treatment practices for help-seeking "prodromal" patients. *Schizophr Bull*. 2007;33(3):715-726.
150. Yung AR. Risk, disorder and diagnosis. *Aust N Z J Psychiatry*. 2011;45(11):915-919.
151. Ho BC, Andreasen NC, Ziebell S, Pierson R, Magnotta V. Long-term antipsychotic treatment and brain volumes: a longitudinal study of first-episode schizophrenia. *Arch Gen Psychiatry*. 2011;68(2):128-137.
152. Chakos MH, Schobel SA, Gu H, Gerig G, Bradford D, Charles C, Lieberman JA. Duration of illness and treatment effects on hippocampal volume in male patients with schizophrenia. *Br J Psychiatry*. 2005;186:26-31.
153. McGorry PD, Nelson B, Goldstone S, Yung AR. Clinical staging: a heuristic and practical strategy for new research and better health and social outcomes for psychotic and related mood disorders. *Can J Psychiatry*. 2010;55(8):486-497.
154. Fusar-Poli P, Borgwardt S. Integrating the negative psychotic symptoms in the high risk criteria for the prediction of psychosis. *Med Hypotheses*. 2007;69(4):959-960.
155. Kessler RC, Price RH. Primary prevention of secondary disorders: a proposal and agenda. *Am J Community Psychol*. 1993;21(5):607-633.
156. Thompson AD, Bartholomeusz C, Yung AR. Social cognition deficits and the "ultra high risk" for psychosis population: a review of literature. *Early Interv Psychiatry*. 2011;5(3):192-202.
157. Fusar-Poli P, Valmaggia L, McGuire P. Can antidepressants prevent psychosis? *Lancet*. 2007;370(9601):1746-1748.
158. Berger GE, Wood SJ, Ross M, Hamer CA, Wellard RM, Pell G, Phillips L, Nelson B, Amminger GP, Yung AR, Jackson G, Velakoulis D, Pantelis C, Manji H, McGorry PD. Neuroprotective effects of low-dose lithium in individuals at ultra-high risk for psychosis: a longitudinal MRI/MRS study. *Curr Pharm Des*. 2012;18(4):570-575.
159. Dean O, Giorlando F, Berk M. *N*-acetylcysteine in psychiatry: current therapeutic evidence and potential mechanisms of action. *J Psychiatry Neurosci*. 2011;36(2):78-86.
160. Yung AR, Woods S, Ruhrman S, Addington J, Schultze-Lutter F, Cornblatt B, Amminger P, Bechdolf A, Birchwood M, Borgwardt S, Cannon T, de Haan L, French P, Fusar-Poli P, Keshavan M, Klosterkoetter L, Kwon JS, McGorry P, McGuire P, Mizuno M, Morrison A, Riecher A, Salokangas R, Seidman L, Suzuki M, Valmaggia L, van der Gaag M, Wood SJ, McGlashan TH. Whither the attenuated psychosis syndrome? *Schizophr Bull*. In press.