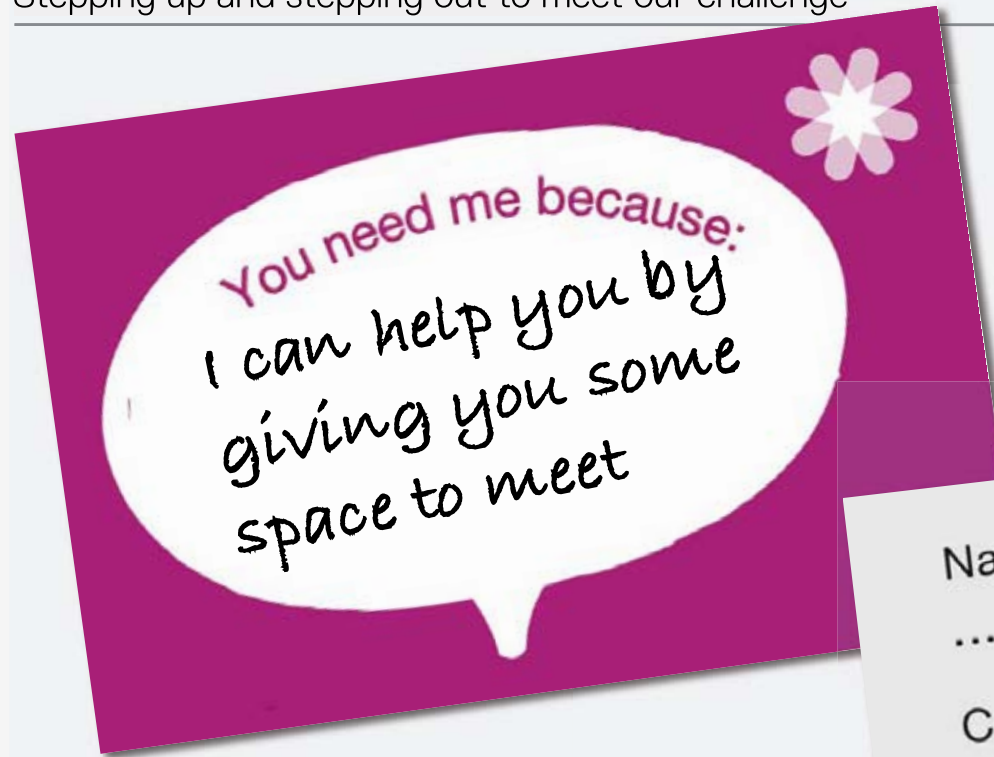


Stepping up and stepping out to meet our challenge

---



[www.lambethcollaborative.org.uk](http://www.lambethcollaborative.org.uk)



**Market Stalls**  
and network,  
network,  
network.

# Welcome



**Stepping up and stepping  
out to meet the challenge**

**Our story starts  
with wanting to  
radically improve  
outcomes together  
within a context of  
reduced public  
expenditure.**





# Co-production is our core framework

## Some big principles:

1. Recognising people as assets
2. Building on people's existing capabilities
3. Peers support networks
4. Blurring distinctions
5. Facilitating rather than delivering
6. Mutuality and reciprocity

Nef&Nesta

**This is bigger than  
Lambeth.**

**We are part of NESTA's  
People Powered Health  
programme**

## What is today all about?

Welcoming  
new faces

Hearing about the  
progress of the  
Collaborative

Working together to  
test and build on  
the proposed **Living  
Well Network**



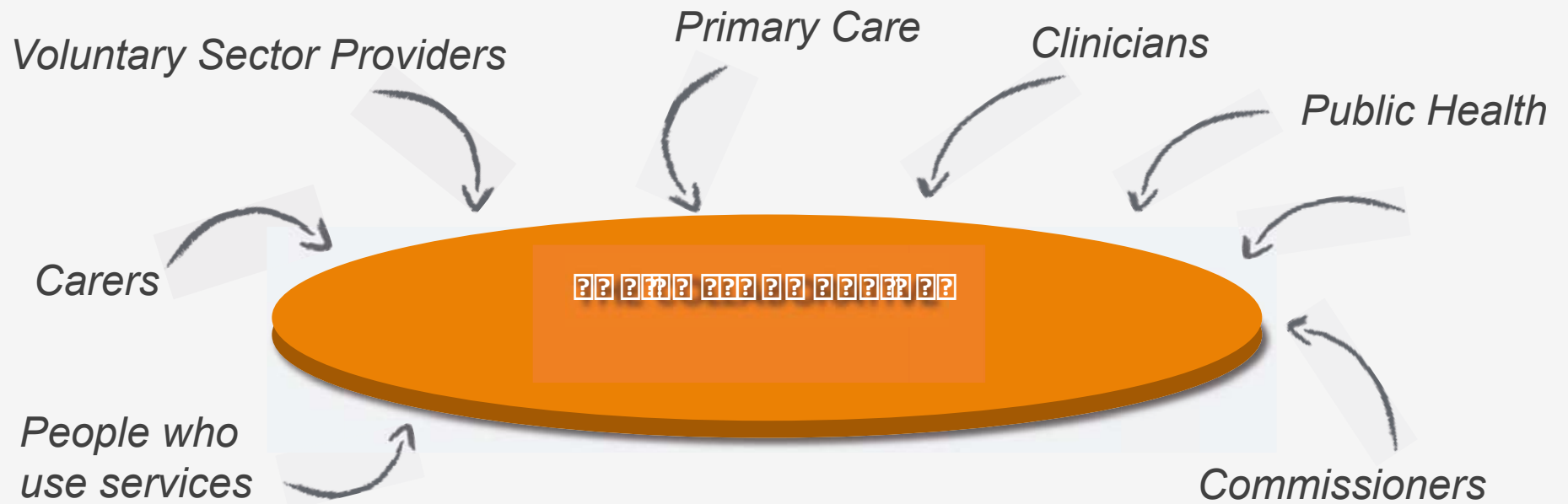
# The vision

Denis O'Rourke

Lucy Canning

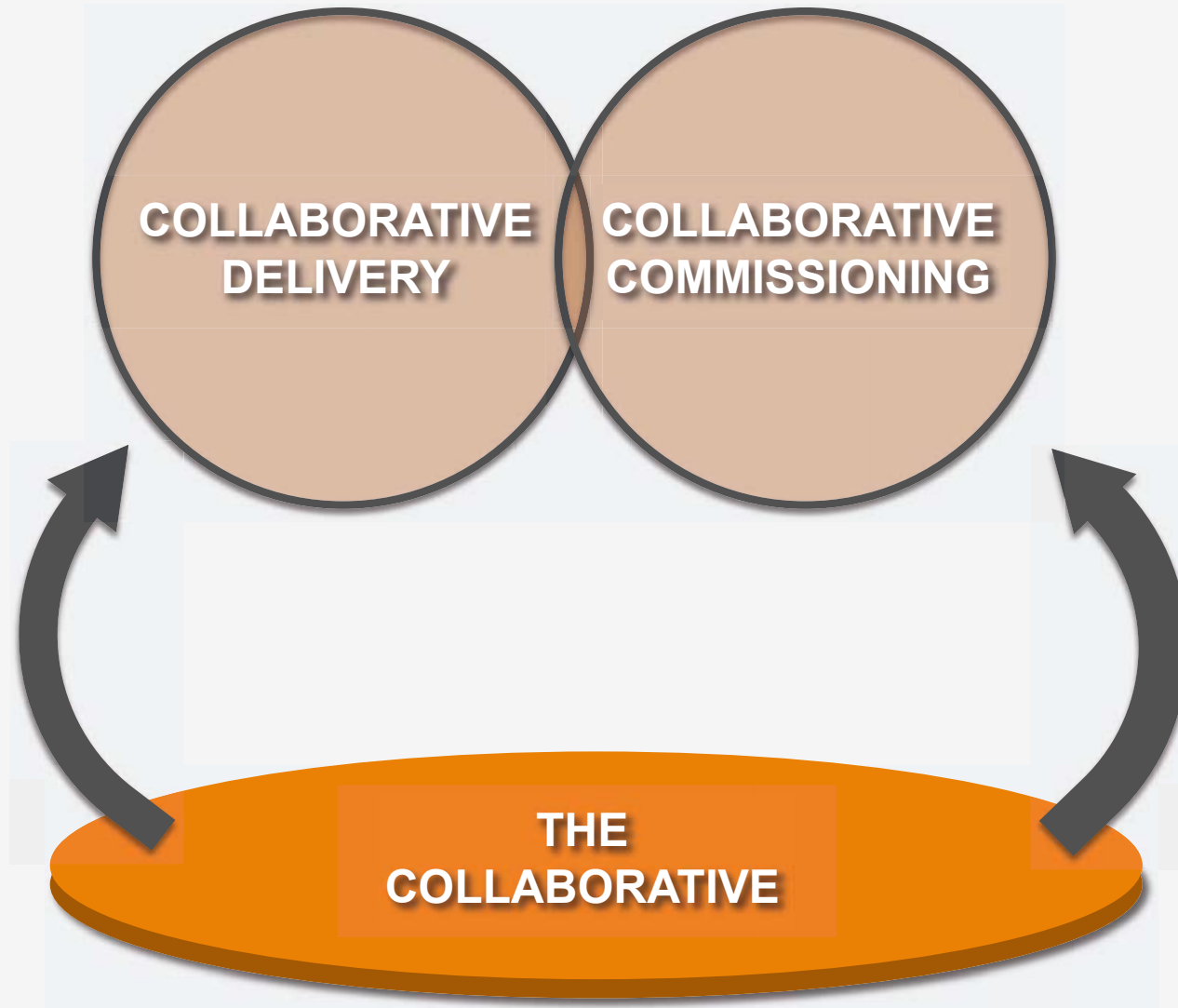
## The Collaborative

A platform for people to come together to radically improve the outcomes experienced by people with mental health problems in Lambeth

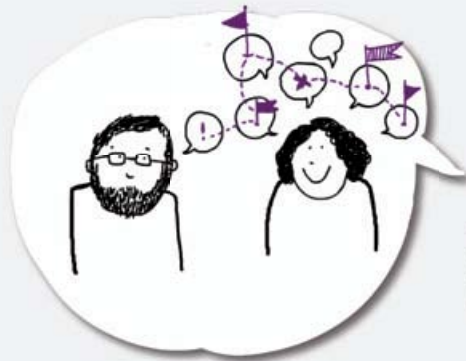


## Our big 3 outcomes:

1. To recover & stay well,
2. To make their own choices,
3. And to participate on an equal footing in daily life



**At the heart of this it's  
about delivering better  
outcomes for less  
investment, by working  
together in new ways**



Making people's  
assets work



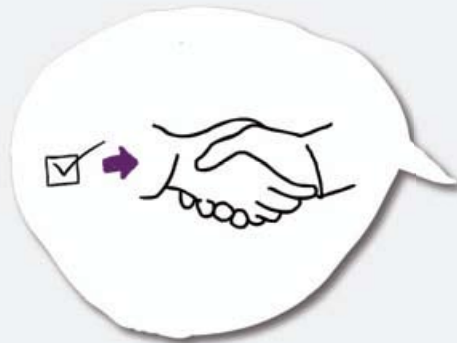
Scaling  
peer support



Bringing together  
specialist and  
community support  
effectively



Building  
community  
assets



Working together differently and  
timebanking



**This means we  
must grow a  
different culture  
across Lambeth**



## How do we grow a different culture?



### PLATFORMS



**Pioneers**



**How we measure  
successes**



**Stories**

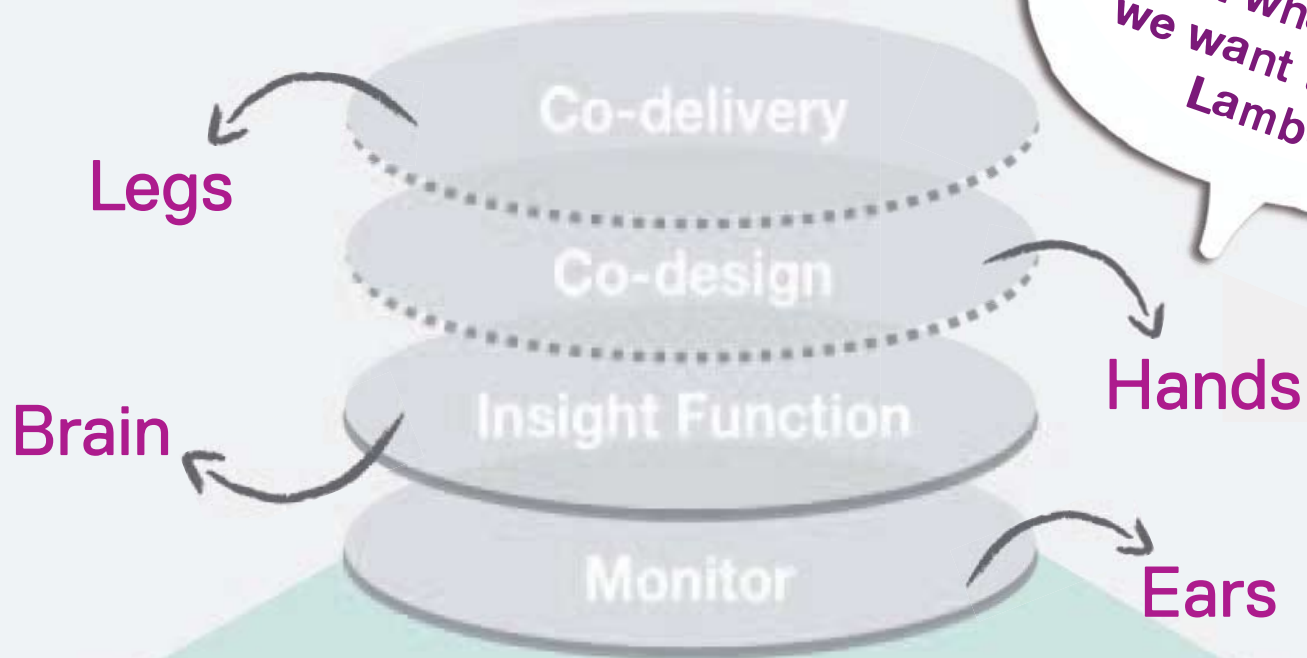
**Its not just about working  
differently with people**

**We must also change the  
way we design and  
commission our services**

## Our **definition** of commissioning:

Commissioning is about enabling an effective dynamic with communities and individuals to understand their **needs**, their **assets** and their **aspirations**, in order to fund and guarantee effective, meaningful and efficient support.

# The Collaborative



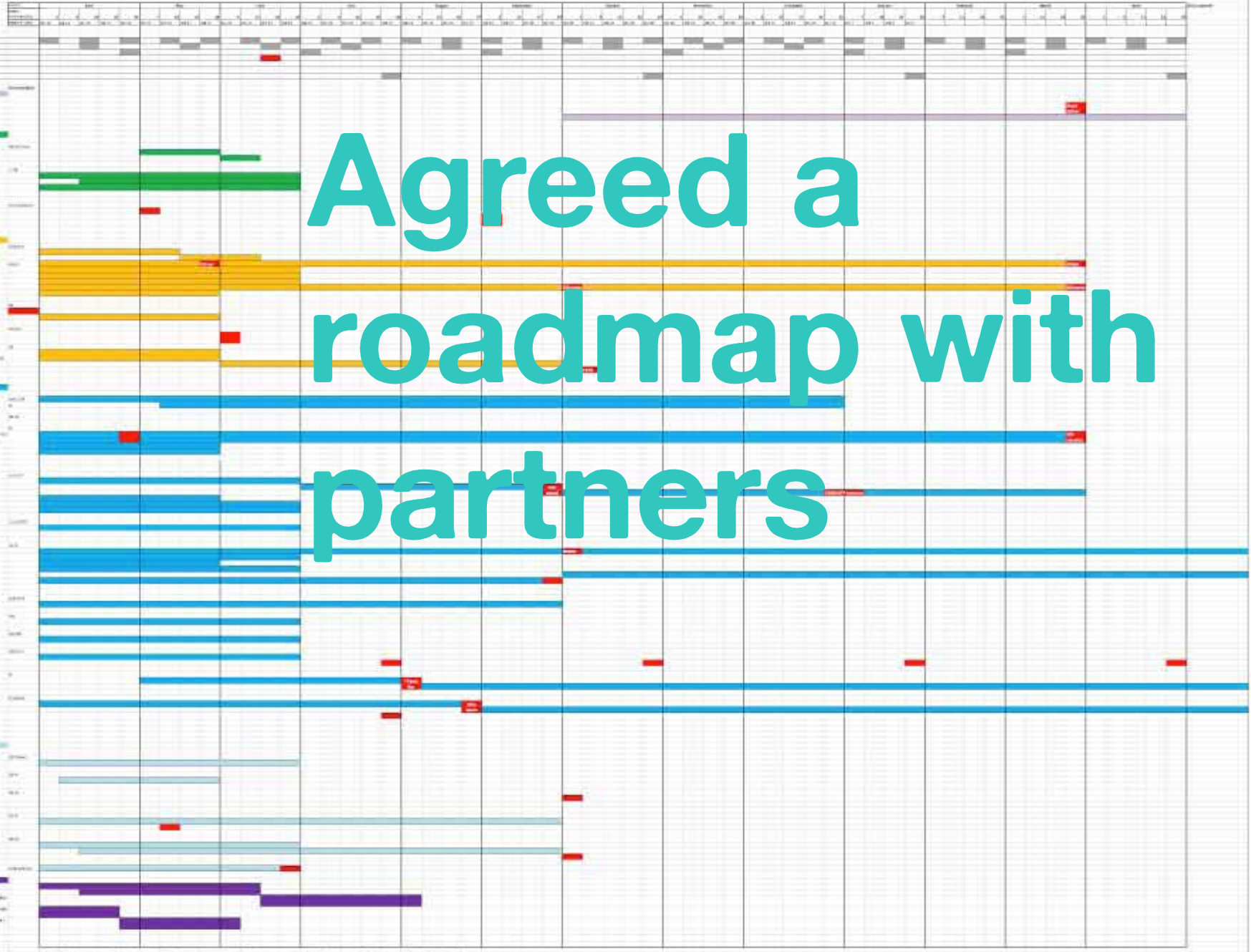
We have to systematically work with people to design and make decisions about what support we want to see in Lambeth

# The Community

# How are we making this happen now?

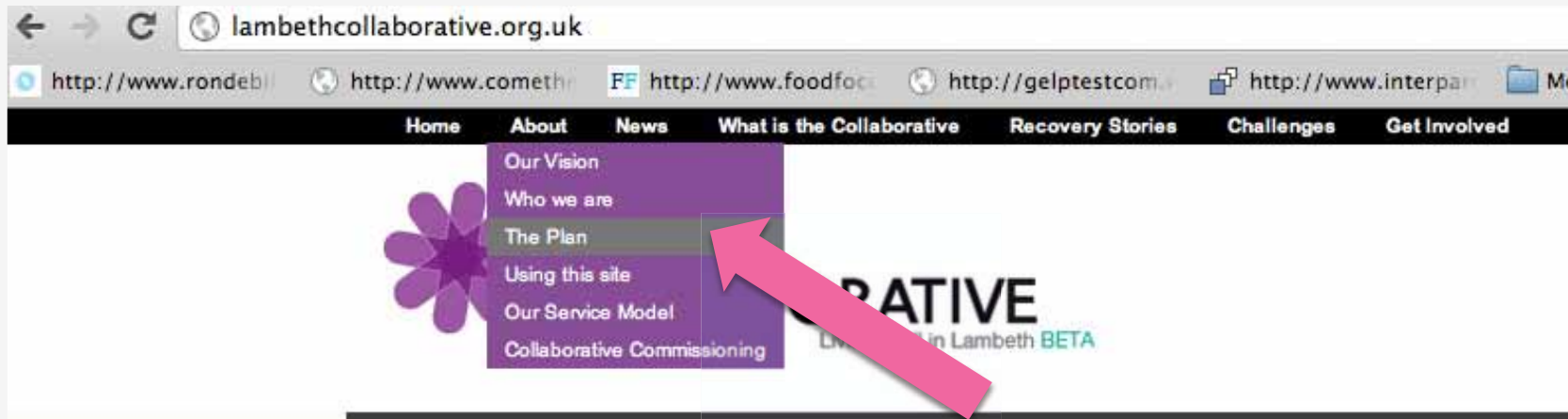
**The Collaborative** has been running an ongoing process involving **over 1,400 people** actively contributing to the **design and delivery** of improved services which includes:

- **200** people supported by **Community Options Team**
- **50** people currently being supported **Primary Care Support Service**
- **Information Hub** opens **January 2013**
- **One Recovery and support Plan** for whole system
- **3** locality **Timebanking** partnerships growing
- **10 Peer Support** initiatives expanding
- **User Voice** being developed in forensic services
- So far **23** people had **Personal Health Budget** to support recovery
- **Draft Alliance Contract** framework developed
- **Incentives** to reward system change biting



Agreed a  
roadmap with  
partners

Stepping up and stepping out to meet our challenge



**Download the Roadmap**



**[www.lambethcollaborative.org.uk](http://www.lambethcollaborative.org.uk)**

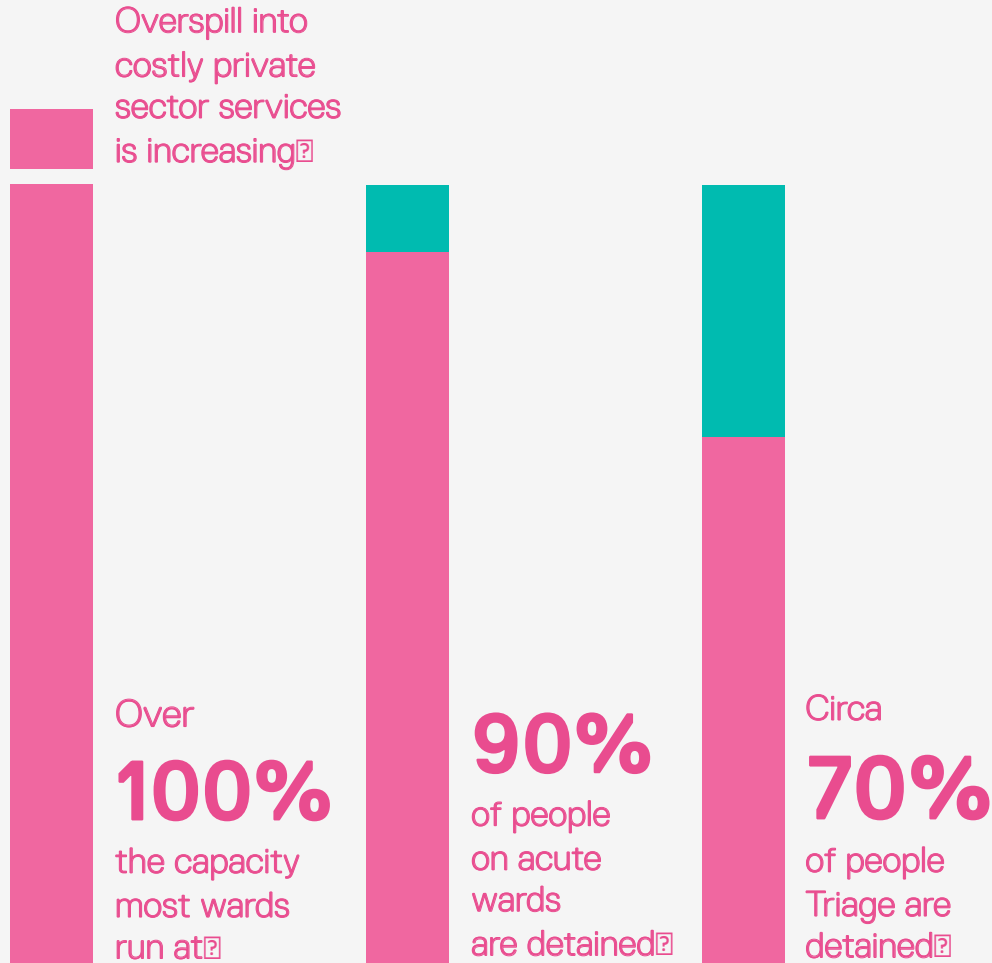




## A short film of interviews about the Collaborative

The Pioneer  
**LAB**

Applying our way of working  
to **co-designing the model  
of support** for people  
experiencing acute mental  
distress



**900**

AMHPS assessments between 2011-12?

**103**

AMHPS assessments in August 2012. 96 known to services?

**895**

Admissions to acute wards between 2011-12?



**80%**

of people sectioned are known to services?

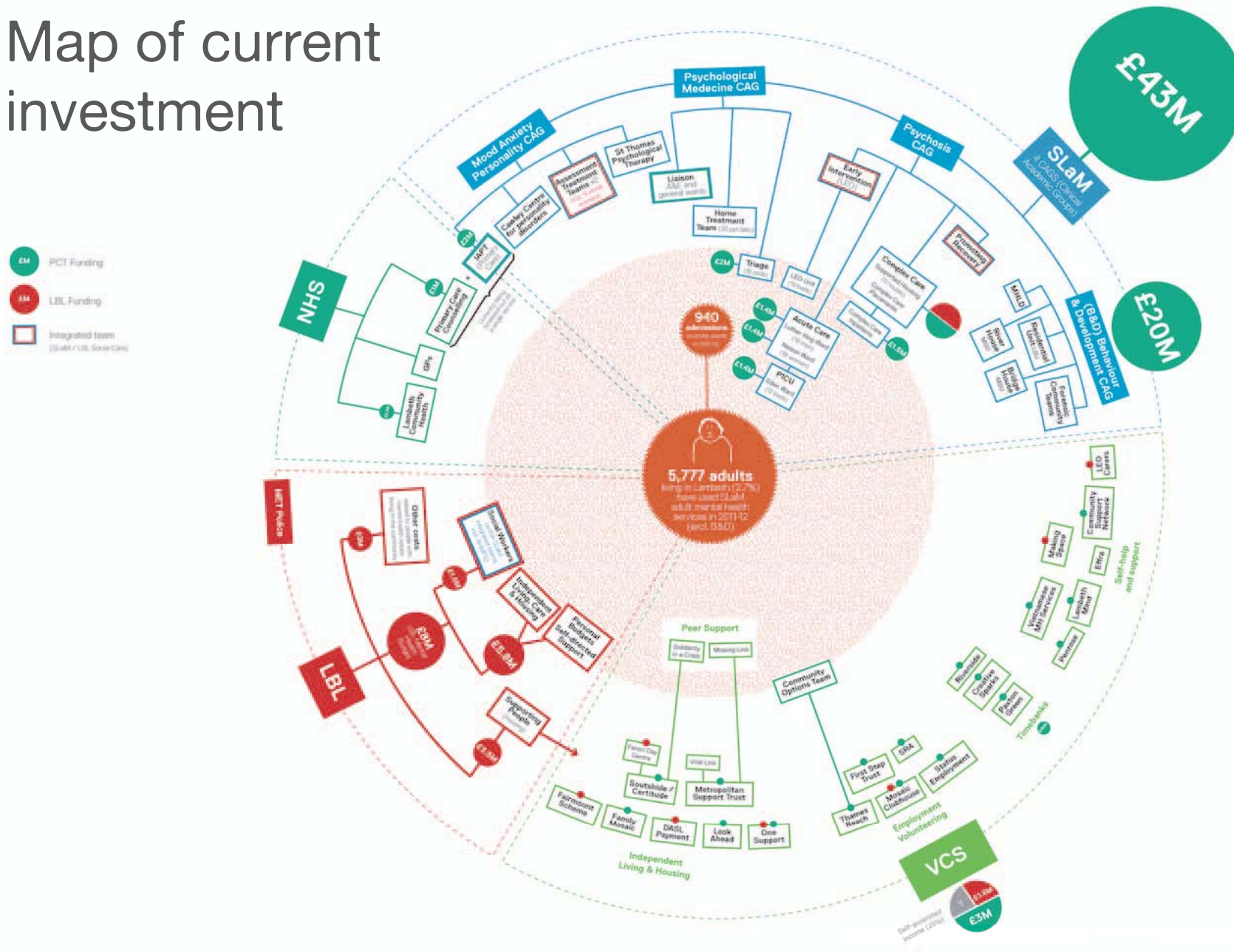
**21 days**

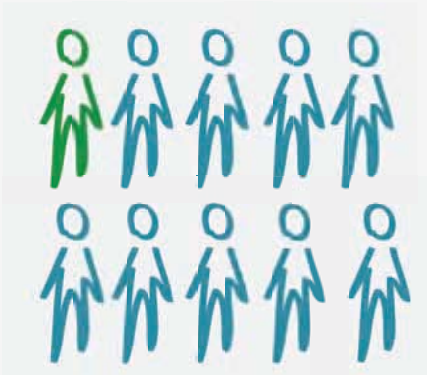
is the average stay on acute wards?



Research conducted by the Innovation Unit with SLaM April 2012

# Map of current investment





**11.3%**

Increase in 15-34 year olds in Lambeth between 2010-11 based on census and ONS data<sup>2</sup>

**6.5%**

Increase in Lambeth population between 2010-11 based on census and ONS data<sup>2</sup>



**97**

People had a First Episode of Psychosis (FEP) in 2011<sup>2</sup>



**92%**

People who had FEP receiving intervention using Census 2011<sup>2</sup>



**102.3%**

People who had FEP receiving intervention using ONS

*Translating the population level numbers of 25-34 years from the census into table 4.9 of the Campion and Costa-Freda 2012 report on numbers with First Episode Psychosis (FEP) and proportion receiving intervention alters the proportions receiving intervention*

## Collaborative Commissioning in Practice

### 4. The LEGS

A series of sessions to **simulate our model** and identify how we can begin to deliver it through **a draft specification** and how we **test it**

### 2. The BRAIN

Two workshops with to **explore and develop shared insights.**

**Co-design with peer supporters, carers, people who use services, clinicians, GPs, service managers and commissioners**

### 3. The HANDS

A series of workshops to **develop a shared model to deliver a co-production led approach** and meet the challenges we identified together

### 1. The EARS

**Stories from peer supporters** gathered from the wards.  
**Conversations with services and staff**

Co-delivery

Co-design

Insight Function

Monitor

Moving from a **crisis  
focused system** to one  
that is focused on **early  
intervention and  
reablement**

